

Datasheet for ABIN1736346  
**anti-Lamin C antibody (N-Term)**[Go to Product page](#)

## 1 Image

## Overview

|                      |   |
|----------------------|---|
| Quantity:            | 50 µL   |
| Target:              | Lamin C   |
| Binding Specificity: | N-Term  |
| Reactivity:          | Human, Mouse, Rat   |
| Host:                | Rabbit  |
| Clonality:           | Polyclonal  |
| Conjugate:           | This Lamin C antibody is un-conjugated  |
| Application:         | Western Blotting (WB), Immunofluorescence (IF), Immunohistochemistry (Paraffin-embedded Sections) (IHC (p)) |

## Product Details

|                             |  |
|-----------------------------|--|
| Immunogen:                  | Synthetic peptide made from the last 8 amino acids of human Lamin C, including an N-terminal lysine as a linker (KHHVSGSRR), coupled to KLH.           |
| Isotype:                    | IgG  |
| Specificity:                | Reacts with the N-terminus part of human Lamin C   |
| Cross-Reactivity:           | Mouse (Murine), Rat (Rattus)   |
| Cross-Reactivity (Details): | Cross reacts with mouse and rat protein. When tested against nuclear protein extracts from HeLa cells it reacts with a single band migrating at 65 kD. |
| Purification:               | Purified   |

## Target Details

|           |                                  |
|-----------|----------------------------------|
| Target:   | Lamin C                          |
| Abstract: | <a href="#">Lamin C Products</a> |

## Application Details

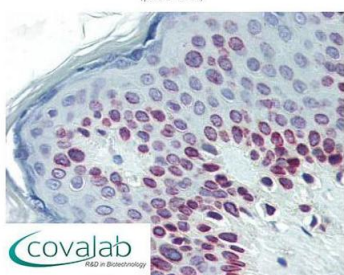
|                    |  |
|--------------------|--|
| Application Notes: | Working dilution: IF, IHC - P (1:50), WB |
| Restrictions:      | For Research Use only                    |

## Handling

|                    |  |
|--------------------|--|
| Format:            | Liquid   |
| Buffer:            | PBS, 0.1 % Sodium azide  |
| Preservative:      | Sodium azide   |
| Precaution of Use: | This product contains Sodium azide: a POISONOUS AND HAZARDOUS SUBSTANCE which should be handled by trained staff only. |
| Storage:           | 4 °C/-20 °C  |
| Storage Comment:   | Long term: -20°C, Short term: +4°C. Avoid repeat freeze-thaw cycles.   |

## Images

### IHC : Lamin C (N-Terminus) antibody (pab74963)



Anti-Lamin C antibody IHC staining of human skin.  
Immunohistochemistry of formalin-fixed, paraffin-embedded  
tissue after heat-induced antigen retrieval. Antibody  
pab74963 dilution 1:50.

Image 1.