



Datasheet for ABIN1736367
anti-CERS6 antibody (N-Term)



[Go to Product page](#)

2 Images

Overview

Quantity:	50 µg
Target:	CERS6
Binding Specificity:	N-Term
Reactivity:	Human, Mouse, Rat
Host:	Rabbit
Clonality:	Polyclonal
Conjugate:	This CERS6 antibody is un-conjugated
Application:	ELISA, Western Blotting (WB), Immunohistochemistry (Paraffin-embedded Sections) (IHC (p))

Product Details

Immunogen:	LASS6 antibody was raised against a 13 amino acid peptide near the amino terminus of the human LASS6.
Isotype:	IgG
Specificity:	Reacts with at least two isoforms of LASS6
Cross-Reactivity:	Mouse (Murine), Rat (Rattus)
Cross-Reactivity (Details):	This antibody is predicted not to cross-react with LASS5. Cross reacts with mouse and rat protein.
Purification:	Antigen affinity purified

Target Details

Target:	CERS6
Alternative Name:	LASS6 (CERS6 Products)
UniProt:	Q6ZMG9

Application Details

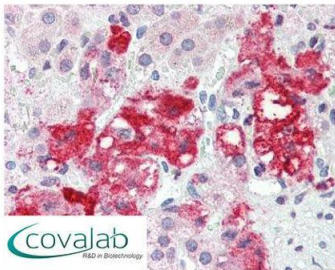
Application Notes:	Working dilution: ELISA, IHC-P (5 µg/mL), WB (1 - 2 µg/mL)
Restrictions:	For Research Use only

Handling

Format:	Liquid
Concentration:	1 mg/mL
Buffer:	PBS, Sodium azide 0.02 %
Preservative:	Sodium azide
Precaution of Use:	This product contains Sodium azide: a POISONOUS AND HAZARDOUS SUBSTANCE which should be handled by trained staff only.
Storage:	4 °C/-20 °C
Storage Comment:	Short term 4°C, long term aliquot and store at -20°C, avoid freeze thaw cycles. Store undiluted.

Images

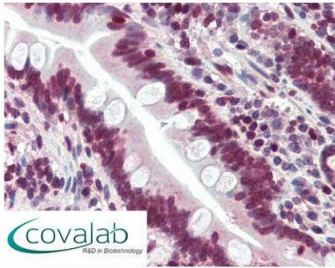
IHC : LASS6 (N-Terminus) antibody (pab71610)



Anti-LASS6 antibody IHC staining of human adrenal. Immunohistochemistry of formalin-fixed, paraffin-embedded tissue after heat-induced antigen retrieval. Antibody pab71610 concentration 5 µg/ml.

Image 1.

IHC : LASS6
(N-Terminus) antibody
(pab71610)



Anti-LASS6 antibody IHC staining of human small intestine. Immunohistochemistry of formalin-fixed, paraffin-embedded tissue after heat-induced antigen retrieval. Antibody pab71610 concentration 5 ug/ml.

Image 2.