

Datasheet for ABIN1736431  
**anti-LGI4 antibody (Internal Region)**

## 3 Images

[Go to Product page](#)

## Overview

Quantity:	50 µg
Target:	LGI4
Binding Specificity:	Internal Region
Reactivity:	Human, Mouse, Rat
Host:	Rabbit
Clonality:	Polyclonal
Conjugate:	This LGI4 antibody is un-conjugated
Application:	Western Blotting (WB), ELISA, Immunohistochemistry (Paraffin-embedded Sections) (IHC (p))

## Product Details

Immunogen:	14 amino acid peptide from near the center of human LGI4.
Isotype:	IgG
Specificity:	Reacts with the internal part of human LGI4
Cross-Reactivity:	Mouse (Murine), Rat (Rattus)
Cross-Reactivity (Details):	Cross reacts with mouse and rat protein.
Purification:	Antigen affinity purified

## Target Details

Target:	LGI4
Alternative Name:	LGI4 ( <a href="#">LGI4 Products</a> )

## Target Details

UniProt: [Q8N135](#)

## Application Details

Application Notes: Working dilution: ELISA, IHC-P (5 µg/mL), WB (1 - 2 µg/mL)

Restrictions: For Research Use only

## Handling

Format: Liquid

Concentration: 1 mg/mL

Buffer: PBS, Sodium azide 0.02 %

Preservative: Sodium azide

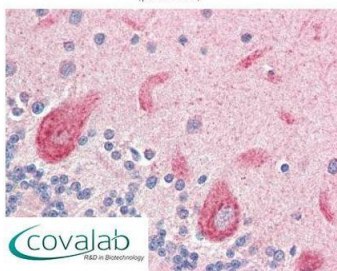
Precaution of Use: This product contains Sodium azide: a POISONOUS AND HAZARDOUS SUBSTANCE which should be handled by trained staff only.

Storage: 4 °C/-20 °C

Storage Comment: Short term 4°C, long term aliquot and store at -20°C, avoid freeze thaw cycles. Store undiluted.

## Images

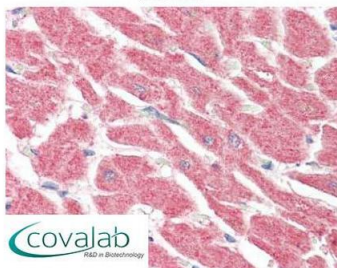
### IHC : LGI4 (Internal) antibody (pab71618)



Anti-LGI4 antibody IHC staining of human brain, cerebellum.  
Immunohistochemistry of formalin-fixed, paraffin-embedded  
tissue after heat-induced antigen retrieval. Antibody  
pab71618 concentration 5 µg/ml.

Image 1.

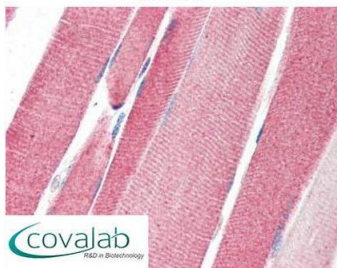
**IHC : LGI4**  
**(Internal) antibody**  
(pab71618)



Anti-LGI4 antibody IHC staining of human heart.  
Immunohistochemistry of formalin-fixed, paraffin-embedded  
tissue after heat-induced antigen retrieval. Antibody  
pab71618 concentration 5 ug/ml.

Image 2.

**IHC : LGI4**  
**(Internal) antibody**  
(pab71618)



Anti-LGI4 antibody IHC staining of human skeletal muscle.  
Immunohistochemistry of formalin-fixed, paraffin-embedded  
tissue after heat-induced antigen retrieval. Antibody  
pab71618 concentration 5 ug/ml.

Image 3.