

Datasheet for ABIN1736541
anti-LPHN3 antibody (C-Term)[Go to Product page](#)

1 Image

Overview

Quantity:	50 µg
Target:	LPHN3
Binding Specificity:	C-Term
Reactivity:	Human
Host:	Rabbit
Clonality:	Polyclonal
Conjugate:	This LPHN3 antibody is un-conjugated
Application:	Immunohistochemistry (Paraffin-embedded Sections) (IHC (p))

Product Details

Immunogen:	Synthetic 19 amino acid peptide from C-terminus of human LPHN3. Percent identity with other species by BLAST analysis: Human, Gorilla, Monkey, Marmoset, Mouse, Rat, Bat, Elephant, Panda, Horse, Rabbit, Opossum, Turkey, Chicken, Lizard (100%), Bovine, Platypus (95%), Gibbon (89%).
Isotype:	IgG
Specificity:	Reacts with LPHN3 from Human, Monkey, Mouse, Rat, Bat, Horse, Rabbit, Chicken
Cross-Reactivity (Details):	Predicted to cross react with Bovine.
Purification:	Antigen affinity purified

Target Details

Target:	LPHN3
---------	-------

Target Details

Alternative Name: LPHN3 ([LPHN3 Products](#))

Gene ID: 23284

Application Details

Application Notes: Working dilution: Optimal dilution should be determined by the end user.

The following are guidelines only:

IHC-P (2 µg/mL)

Restrictions: For Research Use only

Handling

Format: Liquid

Concentration: 1 mg/mL

Buffer: PBS, Sodium azide 0.1 %

Preservative: Sodium azide

Precaution of Use: This product contains Sodium azide: a POISONOUS AND HAZARDOUS SUBSTANCE which should be handled by trained staff only.

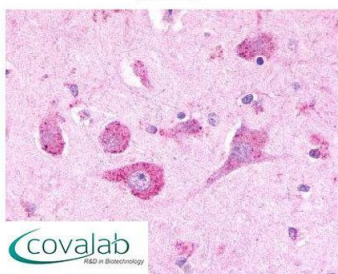
Storage: 4 °C/-80 °C

Storage Comment: Long term: -70°C, Short term: +4°C

Images

IHC : LPHN3 (C-Terminus) antibody

(pab71655)



Anti-LPHN3 antibody pab71655 IHC staining of human brain, neurons. Immunohistochemistry of formalin-fixed, paraffin-embedded tissue after heat-induced antigen retrieval.

Image 1.