

Datasheet for ABIN1736856
anti-MDH1 antibody



[Go to Product page](#)

2 Images

Overview

Quantity:	50 µL
Target:	MDH1
Reactivity:	Human, Pig
Host:	Sheep
Clonality:	Polyclonal
Conjugate:	This MDH1 antibody is un-conjugated
Application:	Western Blotting (WB), ELISA, Immunoprecipitation (IP), Immunohistochemistry (Paraffin-embedded Sections) (IHC (p))

Product Details

Immunogen:	Purified Malate Dehydrogenase from pig heart.
Specificity:	Reacts with porcine MDH1
Cross-Reactivity (Details):	Cross reacts with human protein.
Purification:	Purified

Target Details

Target:	MDH1
Alternative Name:	MDH1 (MDH1 Products)
UniProt:	P40925

Application Details

Application Notes: Working dilution: ELISA, IHC-P (5 µg/mL), IP, WB

Restrictions: For Research Use only

Handling

Format: Liquid

Concentration: 10 mg/mL

Buffer: 0.02 M potassium phosphate, 0.15 M NaCl, pH 7.2, 0.01 % Sodium azide

Preservative: Sodium azide

Precaution of Use: This product contains Sodium azide: a POISONOUS AND HAZARDOUS SUBSTANCE which should be handled by trained staff only.

Storage: 4 °C/-20 °C

Storage Comment: Short term 4°C, long term aliquot and store at -20°C, avoid freeze thaw cycles.

Images

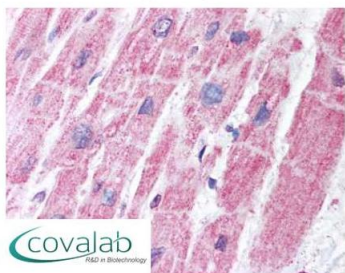
IHC : MDH1 antibody (pab75345)



Anti-MDH1 antibody IHC staining of human skin.
Immunohistochemistry of formalin-fixed,
paraffin-embedded tissue after heat-induced antigen
retrieval. Antibody pab75345 concentration 5 µg/ml.

Image 1.

IHC : MDH1
antibody
(pab75345)



Anti-MDH1 antibody IHC staining of human heart.
Immunohistochemistry of formalin-fixed,
paraffin-embedded tissue after heat-induced antigen
retrieval. Antibody pab75345 concentration 5 ug/ml.

Image 2.