



[Go to Product page](#)

Datasheet for ABIN1736928
anti-MFI2 antibody (N-Term)

2 Images

Overview

Quantity:	50 µg
Target:	MFI2
Binding Specificity:	N-Term
Reactivity:	Human
Host:	Rabbit
Clonality:	Polyclonal
Conjugate:	This MFI2 antibody is un-conjugated
Application:	Immunohistochemistry (Paraffin-embedded Sections) (IHC (p))

Product Details

Immunogen:	Synthetic 15 amino acid peptide from N-terminus of human MFI2. Percent identity with other species by BLAST analysis: Human (100%), Gorilla (100%), Gibbon (100%), Marmoset (100%), Mouse (100%), Dog (100%), Elephant (100%), Panda (100%), Horse (100%)
Isotype:	IgG
Specificity:	Reacts with human MFI2
Cross-Reactivity (Details):	BLAST analysis of the peptide immunogen showed no homology with other human proteins.
Purification:	Antigen affinity purified

Target Details

Target:	MFI2
---------	------

Target Details

Alternative Name:	MF12 (MF12 Products)
UniProt:	P08582
Pathways:	Transition Metal Ion Homeostasis , Cell-Cell Junction Organization

Application Details

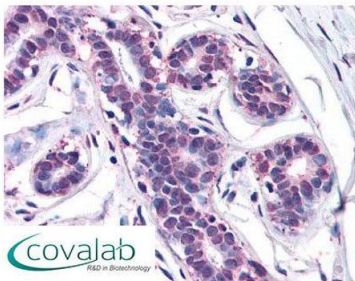
Application Notes:	Working dilution: IHC-P (15 - 20 µg/mL)
Restrictions:	For Research Use only

Handling

Format:	Liquid
Concentration:	1 mg/mL
Buffer:	PBS, Sodium azide 0.1 %
Preservative:	Sodium azide
Precaution of Use:	This product contains Sodium azide: a POISONOUS AND HAZARDOUS SUBSTANCE which should be handled by trained staff only.
Storage:	4 °C/-20 °C
Storage Comment:	Short term 4°C, long term aliquot and store at -20°C, avoid freeze thaw cycles.

Images

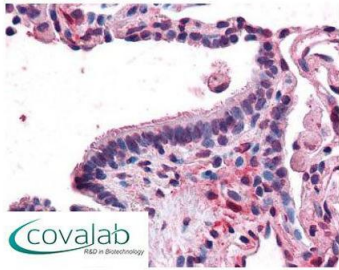
IHC : MF12 (N-Terminus) antibody (pab71734)



Anti-MF12 antibody pab71734 IHC staining of human breast. Immunohistochemistry of formalin-fixed, paraffin-embedded tissue after heat-induced antigen retrieval.

Image 1.

IHC : MFI2
(N-Terminus) antibody
(pab71734)



Anti-MFI2 antibody pab71734 IHC staining of human lung, respiratory epithelium. Immunohistochemistry of formalin-fixed, paraffin-embedded tissue after heat-induced antigen retrieval.

Image 2.