



[Go to Product page](#)

Datasheet for ABIN1737073

anti-MRGPRX2 antibody (2nd Extracellular Domain)

1 Image

Overview

Quantity:	50 µg
Target:	MRGPRX2
Binding Specificity:	2nd Extracellular Domain
Reactivity:	Human
Host:	Rabbit
Clonality:	Polyclonal
Conjugate:	This MRGPRX2 antibody is un-conjugated
Application:	Immunohistochemistry (Paraffin-embedded Sections) (IHC (p))

Product Details

Immunogen:	Synthetic 14 amino acid peptide from 2nd extracellular domain of human MRGPRX2 / MRGX2. Percent identity with other species by BLAST analysis: Human (100%), Orangutan (100%), Monkey (100%), Chimpanzee (86%), Gorilla (86%), Gibbon (86%), Marmoset (86%).
Isotype:	IgG
Specificity:	Reacts with human MRGPRX2 / MRGX2
Cross-Reactivity (Details):	BLAST analysis of the peptide immunogen showed no homology with other human proteins, except MRGPRX1 (71 %), MRGPRX4 (64 %), MRGPRX3 (57 %).
Purification:	Antigen affinity purified

Target Details

Target:	MRGPRX2
---------	---------

Target Details

Alternative Name: MRGPRX2 / MRGX2 ([MRGPRX2 Products](#))

UniProt: [Q96LB1](#)

Application Details

Application Notes: Working dilution: IHC-P (2 µg/mL - 4

Restrictions: For Research Use only

Handling

Format: Liquid

Concentration: 1 mg/mL

Buffer: PBS, Sodium azide 0.1 %

Preservative: Sodium azide

Precaution of Use: This product contains Sodium azide: a POISONOUS AND HAZARDOUS SUBSTANCE which should be handled by trained staff only.

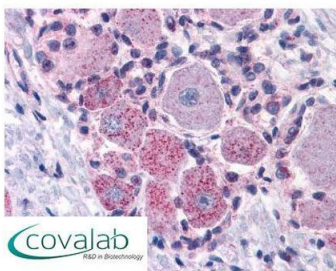
Storage: 4 °C/-80 °C

Storage Comment: Long term: -70°C, Short term: +4°C

Images

IHC : MRGPRX2 / MRGX2 (Extracellular Domain) antibody

(pab71769)



Anti-MRGPRX2 / MRGX2 antibody pab71769 IHC staining of human spinal cord, dorsal root ganglion. Immunohistochemistry of formalin-fixed, paraffin-embedded tissue after heat-induced antigen retrieval.

Image 1.