



[Go to Product page](#)

Datasheet for ABIN1737382

anti-NLRC3 antibody (Internal Region)

2 Images

Overview

Quantity:	50 µg
Target:	NLRC3
Binding Specificity:	Internal Region
Reactivity:	Human, Mouse, Rat
Host:	Rabbit
Clonality:	Polyclonal
Conjugate:	This NLRC3 antibody is un-conjugated
Application:	Western Blotting (WB), ELISA, Immunohistochemistry (Paraffin-embedded Sections) (IHC (p))

Product Details

Immunogen:	NOD3 antibody was raised against an 18 amino acid peptide near the center of human NOD3.
Isotype:	IgG
Specificity:	Reacts with human NLRC3
Cross-Reactivity:	Mouse (Murine), Rat (Rattus)
Cross-Reactivity (Details):	Cross reacts with mouse and rat protein.
Purification:	Antigen affinity purified

Target Details

Target:	NLRC3
Alternative Name:	NLRC3 (NLRC3 Products)

Application Details

Application Notes: Working dilution: ELISA, IHC-P (5 µg/mL), WB (1 - 2 µg/mL)

Restrictions: For Research Use only

Handling

Format: Liquid

Concentration: 1 mg/mL

Buffer: PBS, Sodium azide 0.02 %

Preservative: Sodium azide

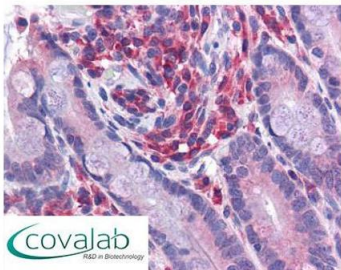
Precaution of Use: This product contains Sodium azide: a POISONOUS AND HAZARDOUS SUBSTANCE which should be handled by trained staff only.

Storage: 4 °C/-20 °C

Storage Comment: Short term 4°C, long term aliquot and store at -20°C, avoid freeze thaw cycles. Store undiluted.

Images

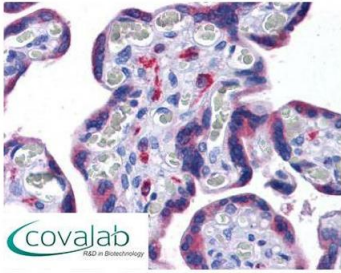
IHC : NLRC3 (Internal) antibody (pab71836)



Anti-NLRC3 antibody IHC staining of human small intestine. Immunohistochemistry of formalin-fixed, paraffin-embedded tissue after heat-induced antigen retrieval. Antibody pab71836 concentration 5 µg/ml.

Image 1.

IHC : NLRC3
(Internal) antibody
(pab71836)



Anti-NLRC3 antibody IHC staining of human placenta.
Immunohistochemistry of formalin-fixed, paraffin-embedded
tissue after heat-induced antigen retrieval. Antibody
pab71836 concentration 5 ug/ml.

Image 2.