

Datasheet for ABIN1737394
anti-NALP8 antibody (N-Term)[Go to Product page](#)

1 Image

Overview

Quantity:	50 µg
Target:	NALP8 (NLRP8)
Binding Specificity:	N-Term
Reactivity:	Human
Host:	Rabbit
Clonality:	Polyclonal
Conjugate:	This NALP8 antibody is un-conjugated
Application:	Western Blotting (WB), ELISA, Immunohistochemistry (Paraffin-embedded Sections) (IHC (p))

Product Details

Immunogen:	NALP8 antibody was raised against a 16 amino acid peptide near the amino terminus of human NALP8.
Isotype:	IgG
Specificity:	Reacts with human NLRP8
Purification:	Antigen affinity purified

Target Details

Target:	NALP8 (NLRP8)
Alternative Name:	NLRP8 (NLRP8 Products)
Gene ID:	126205

Target Details

Pathways: [Inflammasome](#)

Application Details

Application Notes: Working dilution: Optimal dilutions should be determined by the end user.
The following are guidelines only:
IHC-P (5 µg/mL), WB (1 - 2 µg/mL)

Restrictions: For Research Use only

Handling

Format: Liquid

Concentration: 1 mg/mL

Buffer: PBS, Sodium azide 0.02 %

Preservative: Sodium azide

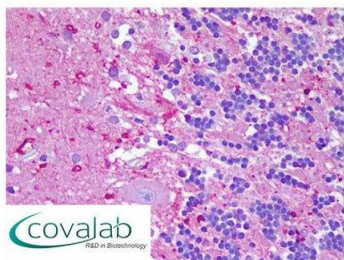
Precaution of Use: This product contains Sodium azide: a POISONOUS AND HAZARDOUS SUBSTANCE which should be handled by trained staff only.

Storage: 4 °C/-20 °C

Storage Comment: Short term 4°C, long term aliquot and store at -20°C, avoid freeze thaw cycles. Store undiluted.

Images

IHC : NLRP8 (N-Terminus) antibody (pab71845)



Anti-NLRP8 antibody IHC staining of human brain, cerebellum. Immunohistochemistry of formalin-fixed, paraffin-embedded tissue after heat-induced antigen retrieval. Antibody pab71845 concentration 5 µg/mL.

Image 1.