



[Go to Product page](#)

Datasheet for ABIN1737466

anti-NPFFR1 antibody (2nd Extracellular Domain)

1 Image

Overview

Quantity:	50 µg
Target:	NPFFR1
Binding Specificity:	2nd Extracellular Domain
Reactivity:	Human
Host:	Rabbit
Clonality:	Polyclonal
Conjugate:	This NPFFR1 antibody is un-conjugated
Application:	Immunohistochemistry (Paraffin-embedded Sections) (IHC (p))

Product Details

Immunogen:	Synthetic 20 amino acid peptide from 2nd extracellular domain of human NPFF1 Receptor. Percent identity with other species by BLAST analysis: Human (100%), Gorilla (100%), Gibbon (100%), Monkey (100%), Marmoset (100%), Bovine (100%), Horse (100%)
Isotype:	IgG
Specificity:	Reacts with human NPFF1 Receptor
Cross-Reactivity (Details):	BLAST analysis of the peptide immunogen showed no homology with other human proteins.
Purification:	Antigen affinity purified

Target Details

Target:	NPFFR1
---------	--------

Target Details

Abstract:	NPFFR1 Products
UniProt:	Q9GZQ6
Pathways:	cAMP Metabolic Process

Application Details

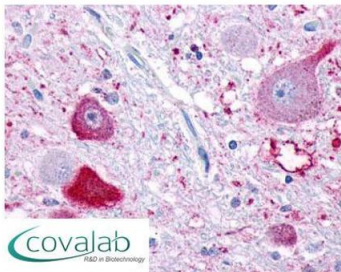
Application Notes:	Working dilution: IHC-P (19 µg/mL)
Restrictions:	For Research Use only

Handling

Format:	Liquid
Concentration:	1 mg/mL
Buffer:	PBS, Sodium azide 0.1 %
Preservative:	Sodium azide
Precaution of Use:	This product contains Sodium azide: a POISONOUS AND HAZARDOUS SUBSTANCE which should be handled by trained staff only.
Storage:	4 °C/-80 °C
Storage Comment:	Long term: -70°C, Short term: +4°C

Images

IHC : NPFF1 Receptor (Extracellular Domain) antibody (pab71868)



Anti-NPFF1 Receptor antibody pab71868 IHC staining of human brain, neurons. Immunohistochemistry of formalin-fixed, paraffin-embedded tissue after heat-induced antigen retrieval.

Image 1.