



[Go to Product page](#)

Datasheet for ABIN1737471
anti-NPFFR2 antibody (C-Term)

2 Images

Overview

Quantity:	50 µg
Target:	NPFFR2 (NPFF2)
Binding Specificity:	C-Term
Reactivity:	Human
Host:	Rabbit
Clonality:	Polyclonal
Conjugate:	This NPFFR2 antibody is un-conjugated
Application:	Immunohistochemistry (Paraffin-embedded Sections) (IHC (p))

Product Details

Immunogen:	Synthetic 18 amino acid peptide from C-terminus of human NPFFR2. Percent identity with other species by BLAST analysis: Human (100%), Gorilla (100%), Gibbon (94%), Monkey (94%), Marmoset (89%).
Isotype:	IgG
Specificity:	Reacts with human NPFFR2
Cross-Reactivity (Details):	BLAST analysis of the peptide immunogen showed no homology with other human proteins.
Purification:	Antigen affinity purified

Target Details

Target:	NPFFR2 (NPFF2)
---------	----------------

Target Details

Alternative Name: NPFFR2 ([NPFF2 Products](#))

UniProt: [Q9Y5X5](#)

Pathways: [cAMP Metabolic Process](#)

Application Details

Application Notes: Working dilution: IHC-P (4 µg/mL - 7

Restrictions: For Research Use only

Handling

Format: Liquid

Concentration: 1 mg/mL

Buffer: PBS, Sodium azide 0.1 %

Preservative: Sodium azide

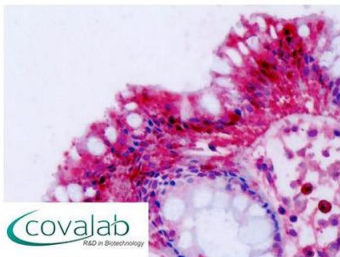
Precaution of Use: This product contains Sodium azide: a POISONOUS AND HAZARDOUS SUBSTANCE which should be handled by trained staff only.

Storage: 4 °C/-80 °C

Storage Comment: Long term: -70°C, Short term: +4°C

Images

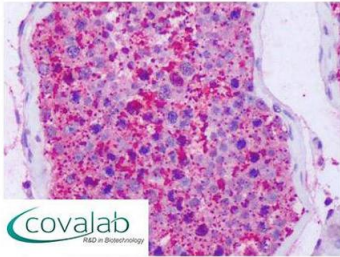
IHC : NPFFR2 (C-Terminus) antibody (pab71869)



Anti-NPFF2 / NPFFR2 antibody IHC staining of human colon.
Immunohistochemistry of formalin-fixed, paraffin-embedded
tissue after heat-induced antigen retrieval.
Antibody dilution 4-7 µg/ml.

Image 1.

**IHC : NPFFR2
(C-Terminus) antibody**
(pab71869)



Anti-NPFF2 / NPFFR2 antibody IHC staining of human testis.
Immunohistochemistry of formalin-fixed, paraffin-embedded
tissue after heat-induced antigen retrieval.
Antibody dilution 4-7 ug/ml.

Image 2.