

Datasheet for ABIN1737869
anti-PARL antibody (N-Term)[Go to Product page](#)

1 Image

Overview

| | |
|----------------------|------------------------------------------------------------------------------------|
| Quantity: | 50 µg |
| Target: | PARL |
| Binding Specificity: | N-Term |
| Reactivity: | Human, Mouse, Rat |
| Host: | Rabbit |
| Clonality: | Polyclonal |
| Conjugate: | This PARL antibody is un-conjugated |
| Application: | Western Blotting (WB), Immunohistochemistry (Paraffin-embedded Sections) (IHC (p)) |

Product Details

| | |
|-----------------------------|------------------------------------------------------------------------------------------------------|
| Immunogen: | PARL antibody was raised against a 15 amino acid peptide from near the amino terminus of human PARL. |
| Isotype: | IgG |
| Specificity: | Reacts with the N-terminus part of human PARL |
| Cross-Reactivity: | Mouse (Murine), Rat (Rattus) |
| Cross-Reactivity (Details): | Cross reacts with mouse and rat protein. |
| Purification: | Antigen affinity purified |

Target Details

| | |
|---------|------|
| Target: | PARL |
|---------|------|

Target Details

Alternative Name: PARL ([PARL Products](#))

UniProt: [Q9H300](#)

Pathways: [Autophagy](#)

Application Details

Application Notes: Working dilution: IHC-P (5 µg/mL), WB (1 - 2 µg/mL)

Restrictions: For Research Use only

Handling

Format: Liquid

Concentration: 1 mg/mL

Buffer: PBS, Sodium azide 0.02 %

Preservative: Sodium azide

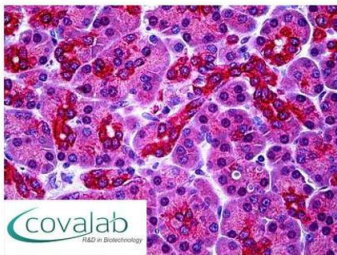
Precaution of Use: This product contains Sodium azide: a POISONOUS AND HAZARDOUS SUBSTANCE which should be handled by trained staff only.

Storage: 4 °C/-20 °C

Storage Comment: Short term 4°C, long term aliquot and store at -20°C, avoid freeze thaw cycles. Store undiluted.

Images

IHC : PARL (N-Terminus) antibody (pab72053)



Anti-PARL antibody IHC staining of human pancreas.
Immunohistochemistry of formalin-fixed, paraffin-
embedded tissue after heat-induced antigen
retrieval. Antibody pab72053 concentration 5 µg/ml.

Image 1.