

Datasheet for ABIN1738141  
**anti-PLAC1 antibody (C-Term)**[Go to Product page](#)

## 1 Image

## Overview

Quantity:	50 µg
Target:	PLAC1
Binding Specificity:	C-Term
Reactivity:	Human
Host:	Rabbit
Clonality:	Polyclonal
Conjugate:	This PLAC1 antibody is un-conjugated
Application:	ELISA, Western Blotting (WB), Immunohistochemistry (Paraffin-embedded Sections) (IHC (p))

## Product Details

Immunogen:	PLAC1 antibody was raised against a 15 amino acid peptide near the carboxy terminus of human PLAC1.
Isotype:	IgG
Specificity:	Reacts with human PLAC1
Purification:	Antigen affinity purified

## Target Details

Target:	PLAC1
Alternative Name:	PLAC1 ( <a href="#">PLAC1 Products</a> )
UniProt:	<a href="#">Q9HBJ0</a>

## Application Details

Application Notes: Working dilution: ELISA, IHC-P (5 µg/mL), WB (1 - 2 µg/mL)

Restrictions: For Research Use only

## Handling

Format: Liquid

Concentration: 1 mg/mL

Buffer: PBS, Sodium azide 0.02 %

Preservative: Sodium azide

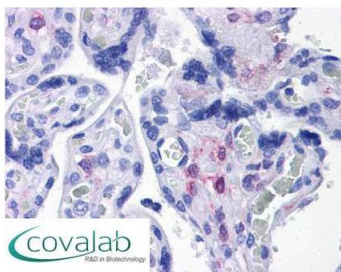
Precaution of Use: This product contains Sodium azide: a POISONOUS AND HAZARDOUS SUBSTANCE which should be handled by trained staff only.

Storage: 4 °C/-20 °C

Storage Comment: Short term 4°C, long term aliquot and store at -20°C, avoid freeze thaw cycles. Store undiluted.

## Images

### IHC : PLAC1 (C-Terminus) antibody (pab72432)



Anti-PLAC1 antibody IHC staining of human placenta.  
Immunohistochemistry of formalin-fixed,  
paraffin-embedded tissue after heat-induced antigen  
retrieval. Antibody pab72432 concentration 5 µg/ml.

Image 1.