



[Go to Product page](#)

Datasheet for ABIN1738317
anti-PRDM16 antibody (C-Term)

1 Image

Overview

Quantity:	50 µg
Target:	PRDM16
Binding Specificity:	C-Term
Reactivity:	Human, Mouse, Rat
Host:	Rabbit
Clonality:	Polyclonal
Application:	ELISA, Western Blotting (WB), Immunohistochemistry (Paraffin-embedded Sections) (IHC (p))

Product Details

Immunogen:	PRDM16 antibody was raised against a 17 amino acid peptide from near the carboxy terminus of human PRDM16.
Isotype:	IgG
Specificity:	Reacts with the C-terminus part of human PRDM16
Cross-Reactivity:	Mouse (Murine), Rat (Rattus)
Cross-Reactivity (Details):	Cross reacts with mouse and rat protein.
Purification:	Antigen affinity purified

Target Details

Target:	PRDM16
Alternative Name:	PRDM16 (PRDM16 Products)

Target Details

Pathways: [Stem Cell Maintenance](#), [Brown Fat Cell Differentiation](#)

Application Details

Application Notes: Working dilution: ELISA, IHC-P (5 µg/mL), WB (1 - 2 µg/mL)

Restrictions: For Research Use only

Handling

Format: Liquid

Concentration: 1 mg/mL

Buffer: PBS, Sodium azide 0.02 %

Preservative: Sodium azide

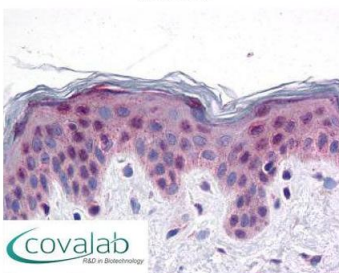
Precaution of Use: This product contains Sodium azide: a POISONOUS AND HAZARDOUS SUBSTANCE which should be handled by trained staff only.

Storage: 4 °C/-20 °C

Storage Comment: Short term 4°C, long term aliquot and store at -20°C, avoid freeze thaw cycles. Store undiluted.

Images

IHC : PRDM16 (C-Terminus) antibody (pab72486)



Anti-PRDM16 antibody IHC staining of human skin.
Immunohistochemistry of formalin-fixed, paraffin-embedded tissue after heat-induced antigen retrieval. Antibody pab72486 concentration 5 µg/ml.

Image 1.