

Datasheet for ABIN1738398

anti-Prokineticin Receptor 1 antibody (Extracellular Domain, N-Term)[Go to Product page](#)**1** Image

Overview

| | |
|----------------------|--|
| Quantity: | 50 µg |
| Target: | Prokineticin Receptor 1 (PROKR1) |
| Binding Specificity: | Extracellular Domain, N-Term |
| Reactivity: | Human |
| Host: | Rabbit |
| Clonality: | Polyclonal |
| Conjugate: | This Prokineticin Receptor 1 antibody is un-conjugated |
| Application: | Western Blotting (WB), Immunohistochemistry (Paraffin-embedded Sections) (IHC (p)) |

Product Details

| | |
|-----------------------------|---|
| Immunogen: | Synthetic 15 amino acid peptide from N-terminal extracellular domain of human PROKR1. Percent identity with other species by BLAST analysis: Human (100%), Gorilla (100%), Gibbon (100%), Monkey (100%), Marmoset (93%), Elephant (80%), Bovine (80%). |
| Isotype: | IgG |
| Specificity: | Reacts with the N-terminus part of human PROKR1 |
| Cross-Reactivity (Details): | BLAST analysis of the peptide immunogen showed no homology with other human proteins. |
| Purification: | Antigen affinity purified |

Target Details

| | |
|---------|----------------------------------|
| Target: | Prokineticin Receptor 1 (PROKR1) |
|---------|----------------------------------|

Target Details

Alternative Name: PROKR1 (PROKR1 Products)

UniProt: Q8TCW9

Pathways: Hedgehog Signaling, EGFR Signaling Pathway, Neurotrophin Signaling Pathway, Myometrial Relaxation and Contraction, G-protein mediated Events, Interaction of EGFR with phospholipase C-gamma

Application Details

Application Notes: Working dilution: IHC-P (7 - 16 µg/mL), WB

Restrictions: For Research Use only

Handling

Format: Liquid

Concentration: 1 mg/mL

Buffer: PBS, Sodium azide 0.1 %

Preservative: Sodium azide

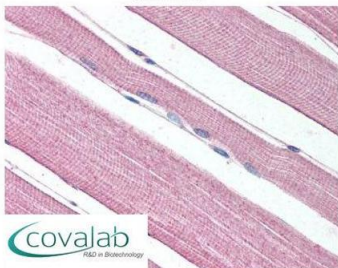
Precaution of Use: This product contains Sodium azide: a POISONOUS AND HAZARDOUS SUBSTANCE which should be handled by trained staff only.

Storage: 4 °C/-80 °C

Storage Comment: Long term: -70°C, Short term: +4°C

Images

IHC : PROKR1 (N-Terminus) antibody (pab72499)



Anti-PROKR1 antibody pab72499 IHC staining of human skeletal muscle. Immunohistochemistry of formalin-fixed, paraffin-embedded tissue after heat-induced antigen retrieval.

Image 1.