

Datasheet for ABIN1738592
anti-PTPMT1 antibody (N-Term)



[Go to Product page](#)

1 Image

Overview

| | |
|----------------------|---|
| Quantity: | 50 µg |
| Target: | PTPMT1 |
| Binding Specificity: | N-Term |
| Reactivity: | Human |
| Host: | Rabbit |
| Clonality: | Polyclonal |
| Conjugate: | This PTPMT1 antibody is un-conjugated |
| Application: | Immunohistochemistry (Paraffin-embedded Sections) (IHC (p)) |

Product Details

| | |
|-----------------------------|--|
| Immunogen: | Synthetic 16 amino acid peptide from N-terminus of human PTPMT1. Percent identity with other species by BLAST analysis: Human (100%), Gorilla (100%), Gibbon (100%), Monkey (100%), Dog (100%), Panda (100%), Marmoset (88%), Bovine (88%), Pig (88%). |
| Isotype: | IgG |
| Specificity: | Reacts with the N-terminus part of human PTPMT1 |
| Cross-Reactivity (Details): | BLAST analysis of the peptide immunogen showed no homology with other human proteins. |
| Purification: | Antigen affinity purified |

Target Details

| | |
|---------|--------|
| Target: | PTPMT1 |
|---------|--------|

Target Details

Alternative Name: PTPMT1 ([PTPMT1 Products](#))

UniProt: [Q8WUK0](#)

Pathways: [Inositol Metabolic Process](#)

Application Details

Application Notes: Working dilution: IHC-P (10 - 15 µg/mL)

Restrictions: For Research Use only

Handling

Format: Liquid

Concentration: 1 mg/mL

Buffer: PBS, Sodium azide 0.1 %

Preservative: Sodium azide

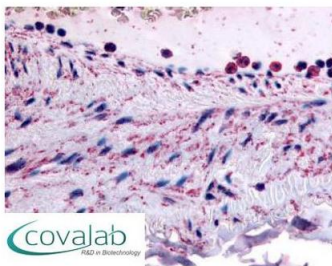
Precaution of Use: This product contains Sodium azide: a POISONOUS AND HAZARDOUS SUBSTANCE which should be handled by trained staff only.

Storage: 4 °C/-80 °C

Storage Comment: Long term: -70°C, Short term: +4°C

Images

IHC : PTPMT1 (N-Terminus) antibody (pab72656)



Anti-PTPMT1 antibody pab72656 IHC staining of human vascular smooth muscle. Immunohistochemistry of formalin-fixed, paraffin-embedded tissue after heat-induced antigen retrieval.

Image 1.