

Datasheet for ABIN1738738
anti-RAS antibody (pan)



[Go to Product page](#)

1 Image

Overview

Quantity:	50 µg
Target:	RAS
Binding Specificity:	pan
Reactivity:	Human, Rat, Mouse
Host:	Rabbit
Clonality:	Polyclonal
Conjugate:	This RAS antibody is un-conjugated
Application:	Western Blotting (WB), ELISA, Immunohistochemistry (Paraffin-embedded Sections) (IHC (p))

Product Details

Immunogen:	Synthetic peptide from human RASH/RASK.
Isotype:	IgG
Specificity:	Reacts with the N-terminus part of human Ras, Pan. Cross reacts with mouse and rat protein.
Purification:	Antigen affinity purified

Target Details

Target:	RAS
Alternative Name:	Ras (RAS Products)

Application Details

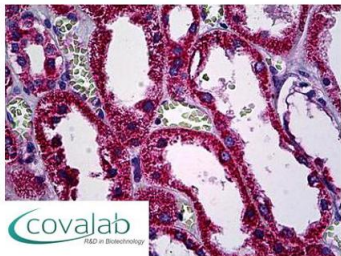
Application Notes:	Working dilution: ELISA (1:20000), IHC-P (5 µg/mL), WB (1:500 - 1:1000)
Restrictions:	For Research Use only

Handling

Format:	Liquid
Concentration:	1 mg/mL
Buffer:	PBS (without Mg2+, Ca2+), pH 7.4, NaCl 150 mM, glycerol 50 %
Preservative:	Sodium azide
Precaution of Use:	This product contains Sodium azide: a POISONOUS AND HAZARDOUS SUBSTANCE which should be handled by trained staff only.
Storage:	4 °C/-20 °C
Storage Comment:	Short term 4°C, long term aliquot and store at -20°C, avoid freeze thaw cycles.

Images

IHC : Ras, Pan
(N-Terminus) antibody
(pab73729)



Anti-Ras, Pan antibody IHC staining of human kidney.
Immunohistochemistry of formalin-fixed, paraffin-embedded tissue after heat-induced antigen retrieval. Antibody pab73729 concentration 5 ug/ml.

Image 1.