



[Go to Product page](#)

Datasheet for ABIN1738965

## anti-RREB1 antibody

### 1 Image

#### Overview

Quantity:	50 µg
Target:	RREB1
Reactivity:	Human, Mouse
Host:	Rabbit
Clonality:	Polyclonal
Application:	Western Blotting (WB), ELISA, Immunohistochemistry (Paraffin-embedded Sections) (IHC (p)), Immunofluorescence (IF)

#### Product Details

Immunogen:	Recombinant mouse RREB1.
Isotype:	IgG
Specificity:	Reacts with mouse RREB1
Cross-Reactivity (Details):	Cross reacts with human protein.
Purification:	Purified (protein A)

#### Target Details

Target:	RREB1
Alternative Name:	RREB1 ( <a href="#">RREB1 Products</a> )
UniProt:	<a href="#">Q92766</a>

## Application Details

Application Notes: Working dilution: ELISA (1:2000 - 1:10000), IF, IHC - P (10 µg/mL), WB (1:500 - 1:2000)

Restrictions: For Research Use only

## Handling

Format: Liquid

Concentration: 1 mg/mL

Buffer: 0.02 M potassium phosphate, 0.15 M NaCl, pH 7.2, 0.01 % Sodium azide

Preservative: Sodium azide

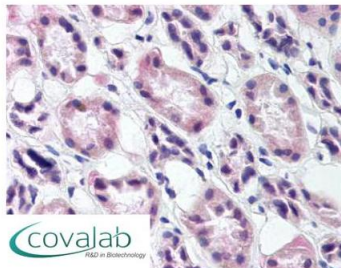
Precaution of Use: This product contains Sodium azide: a POISONOUS AND HAZARDOUS SUBSTANCE which should be handled by trained staff only.

Storage: 4 °C/-20 °C

Storage Comment: +4°C or -20°C, Avoid repeated freezing and thawing.

## Images

### IHC : RREB1 antibody (pab75171)



Anti-RREB1 antibody IHC staining of human kidney.  
Immunohistochemistry of formalin-fixed,  
paraffin-embedded tissue after heat-induced antigen  
retrieval. Antibody pab75171 concentration 10 µg/ml.

Image 1.