



[Go to Product page](#)

Datasheet for ABIN1739322
anti-SLC11A2 antibody (C-Term)

2 Images

Overview

Quantity:	50 µg
Target:	SLC11A2
Binding Specificity:	C-Term
Reactivity:	Human
Host:	Rabbit
Clonality:	Polyclonal
Conjugate:	This SLC11A2 antibody is un-conjugated
Application:	Immunohistochemistry (Paraffin-embedded Sections) (IHC (p))

Product Details

Immunogen:	Synthetic 15 amino acid peptide from C-terminus of human SLC11A2. Percent identity with other species by BLAST analysis: Human (100%), Gibbon (100%), Gorilla (93%), Monkey (93%), Bovine (93%), Elephant (93%), Pig (93%), Dog (87%), Rabbit (87%)
Isotype:	IgG
Specificity:	Reacts with the C-terminus part of human SLC11A2
Cross-Reactivity (Details):	BLAST analysis of the peptide immunogen showed no homology with other human proteins.
Purification:	Antigen affinity purified

Target Details

Target:	SLC11A2
---------	---------

Target Details

Alternative Name:	SLC11A2 (SLC11A2 Products)
UniProt:	P49281
Pathways:	Transition Metal Ion Homeostasis , Proton Transport , Positive Regulation of Endopeptidase Activity

Application Details

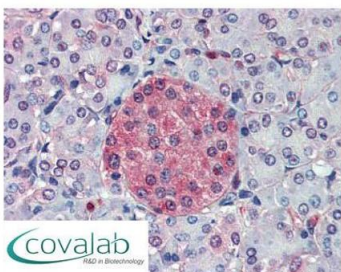
Application Notes:	Working dilution: IHC-P (15 µg/mL)
Restrictions:	For Research Use only

Handling

Format:	Liquid
Concentration:	1 mg/mL
Buffer:	PBS, Sodium azide 0.1 %
Preservative:	Sodium azide
Precaution of Use:	This product contains Sodium azide: a POISONOUS AND HAZARDOUS SUBSTANCE which should be handled by trained staff only.
Storage:	4 °C/-80 °C
Storage Comment:	Long term: -70°C, Short term: +4°C

Images

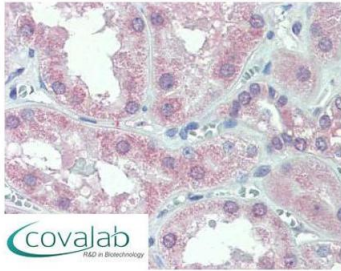
IHC : SLC11A2 (C-Terminus) antibody (pab73220)



Anti-SLC11A2 antibody pab73220 IHC staining of human pancreas. Immunohistochemistry of formalin-fixed, paraffin-embedded tissue after heat-induced antigen retrieval.

Image 1.

IHC : SLC11A2
(C-Terminus) antibody
(pab73220)



Anti-SLC11A2 antibody pab73220 IHC staining of human kidney. Immunohistochemistry of formalin-fixed, paraffin-embedded tissue after heat-induced antigen retrieval.

Image 2.