

Datasheet for ABIN1739393

anti-SLC5A10 antibody (Cytoplasmic Domain)[Go to Product page](#)**1** Image

Overview

Quantity:	50 µg
Target:	SLC5A10
Binding Specificity:	Cytoplasmic Domain
Reactivity:	Human
Host:	Rabbit
Clonality:	Polyclonal
Conjugate:	This SLC5A10 antibody is un-conjugated
Application:	Immunohistochemistry (Paraffin-embedded Sections) (IHC (p))

Product Details

Immunogen:	Synthetic 18 amino acid peptide from cytoplasmic domain of human SLC5A10. Percent identity with other species by BLAST analysis: Human (100%), Gorilla (100%), Gibbon (100%), Monkey (100%), Marmoset (94%), Rat (94%), Hamster (94%), Elephant (94%)
Isotype:	IgG
Specificity:	Reacts with the cytoplasmic domain of human SLC5A10
Cross-Reactivity (Details):	BLAST analysis of the peptide immunogen showed no homology with other human proteins, except SLC5A1 (67 %).
Purification:	Antigen affinity purified

Target Details

Target:	SLC5A10
---------	---------

Target Details

Alternative Name: SLC5A10 ([SLC5A10 Products](#))

UniProt: [A0PJK1](#)

Application Details

Application Notes: Working dilution: IHC-P (20 µg/mL)

Restrictions: For Research Use only

Handling

Format: Liquid

Concentration: 0.85 mg/mL

Buffer: PBS, Sodium azide 0.1 %

Preservative: Sodium azide

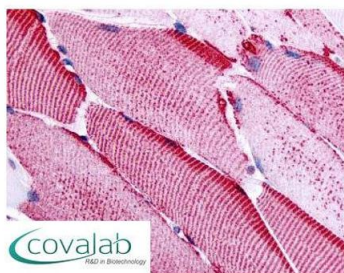
Precaution of Use: This product contains Sodium azide: a POISONOUS AND HAZARDOUS SUBSTANCE which should be handled by trained staff only.

Storage: 4 °C/-80 °C

Storage Comment: Long term: -70°C, Short term: +4°C

Images

IHC : SLC5A10 (Cytoplasmic Domain) antibody (pab73262)



Anti-SLC5A10 antibody pab73262 IHC staining of human skeletal muscle. Immunohistochemistry of formalin-fixed, paraffin-embedded tissue after heat-induced antigen retrieval.

Image 1.