

Datasheet for ABIN1739396
anti-SLC5A2 antibody (C-Term)



[Go to Product page](#)

1 Image

Overview

Quantity:	50 µg
Target:	SLC5A2
Binding Specificity:	C-Term
Reactivity:	Human
Host:	Rabbit
Clonality:	Polyclonal
Conjugate:	This SLC5A2 antibody is un-conjugated
Application:	Immunohistochemistry (Paraffin-embedded Sections) (IHC (p))

Product Details

Immunogen:	Synthetic 17 amino acid peptide from C-terminus of human SLC5A2. Percent identity with other species by BLAST analysis: Human (100%), Gorilla (100%), Gibbon (100%), Monkey (100%), Rat (100%), Elephant (100%), Horse (100%), Marmoset (94%), Mouse (94%)
Isotype:	IgG
Specificity:	Reacts with the C-terminus part of human SLC5A2
Cross-Reactivity (Details):	BLAST analysis of the peptide immunogen showed no homology with other human proteins.
Purification:	Antigen affinity purified

Target Details

Target:	SLC5A2
---------	--------

Target Details

Alternative Name: SLC5A2 ([SLC5A2 Products](#))

UniProt: [P31639](#)

Application Details

Application Notes: Working dilution: IHC-P (20 µg/mL)

Restrictions: For Research Use only

Handling

Format: Liquid

Concentration: 1 mg/mL

Buffer: PBS, Sodium azide 0.1 %

Preservative: Sodium azide

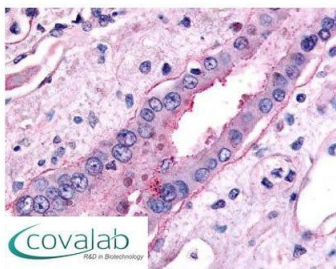
Precaution of Use: This product contains Sodium azide: a POISONOUS AND HAZARDOUS SUBSTANCE which should be handled by trained staff only.

Storage: 4 °C/-80 °C

Storage Comment: Long term: -70°C, Short term: +4°C

Images

IHC : SLC5A2 (C-Terminus) antibody (pab73265)



Anti-SLC5A2 antibody pab73265 IHC staining of human kidney, collecting duct. Immunohistochemistry of formalin-fixed, paraffin-embedded tissue after heat-induced antigen retrieval.

Image 1.