

Datasheet for ABIN1739402
anti-SLC5A4 antibody (C-Term)[Go to Product page](#)

1 Image

Overview

Quantity:	50 µg
Target:	SLC5A4
Binding Specificity:	C-Term
Reactivity:	Human
Host:	Rabbit
Clonality:	Polyclonal
Conjugate:	This SLC5A4 antibody is un-conjugated
Application:	Immunohistochemistry (Paraffin-embedded Sections) (IHC (p))

Product Details

Immunogen:	Synthetic 16 amino acid peptide from C-terminus of human SLC5A4. Percent identity with other species by BLAST analysis: Human (100%), Gorilla (100%), Gibbon (94%), Baboon (94%), Monkey (94%), Marmoset (81%).
Isotype:	IgG
Specificity:	Reacts with the C-terminus part of human SLC5A4
Cross-Reactivity (Details):	BLAST analysis of the peptide immunogen showed no homology with other human proteins.
Purification:	Antigen affinity purified

Target Details

Target:	SLC5A4
---------	--------

Target Details

Alternative Name: SLC5A4 ([SLC5A4 Products](#))

UniProt: [Q9NY91](#)

Pathways: [Proton Transport](#)

Application Details

Application Notes: Working dilution: IHC-P (20 µg/mL)

Restrictions: For Research Use only

Handling

Format: Liquid

Concentration: 1 mg/mL

Buffer: PBS, Sodium azide 0.1 %

Preservative: Sodium azide

Precaution of Use: This product contains Sodium azide: a POISONOUS AND HAZARDOUS SUBSTANCE which should be handled by trained staff only.

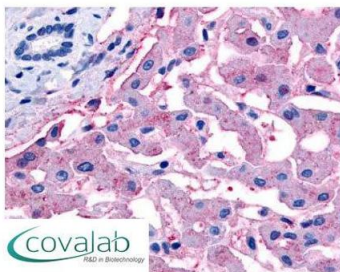
Storage: 4 °C/-80 °C

Storage Comment: Long term: -70°C, Short term: +4°C

Images

IHC : SLC5A4 (C-Terminus) antibody

(pab73270)



Anti-SLC5A4 antibody pab73270 IHC staining of human liver. Immunohistochemistry of formalin-fixed, paraffin-embedded tissue after heat-induced antigen retrieval.

Image 1.