

Datasheet for ABIN1739415  
**anti-SLC7A11 antibody (N-Term)**



[Go to Product page](#)

1 Image

## Overview

Quantity:	50 µg
Target:	SLC7A11
Binding Specificity:	N-Term
Reactivity:	Human
Host:	Rabbit
Clonality:	Polyclonal
Conjugate:	This SLC7A11 antibody is un-conjugated
Application:	Immunohistochemistry (Paraffin-embedded Sections) (IHC (p))

## Product Details

Immunogen:	Synthetic 19 amino acid peptide from near N-terminus of human SLC7A11. Percent identity with other species by BLAST analysis: Human (100%), Gorilla (100%), Orangutan (100%), Gibbon (100%), Monkey (100%), Marmoset (95%), Sheep (84%), Panda (84%)
Isotype:	IgG
Specificity:	Reacts with the N-terminus part of human SLC7A11
Cross-Reactivity (Details):	BLAST analysis of the peptide immunogen showed no homology with other human proteins.
Purification:	Antigen affinity purified

## Target Details

Target:	SLC7A11
---------	---------

## Target Details

---

Alternative Name: SLC7A11 ([SLC7A11 Products](#))

## Application Details

---

Application Notes: Working dilution: IHC-P (8 µg/mL)

Restrictions: For Research Use only

## Handling

---

Format: Liquid

Concentration: 1 mg/mL

Buffer: PBS, Sodium azide 0.1 %

Preservative: Sodium azide

Precaution of Use: This product contains Sodium azide: a POISONOUS AND HAZARDOUS SUBSTANCE which should be handled by trained staff only.

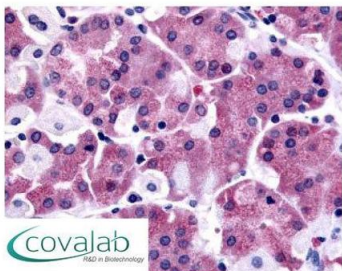
Storage: 4 °C/-80 °C

Storage Comment: Long term: -70°C, Short term: +4°C

## Images

---

**IHC : SLC7A11**  
**(N-Terminus) antibody**  
(pab73279)



Anti-SLC7A11 antibody pab73279 IHC staining of human stomach. Immunohistochemistry of formalin-fixed, paraffin-embedded tissue after heat-induced antigen retrieval.

Image 1.