



[Go to Product page](#)

Datasheet for ABIN1739425  
**anti-SLFN12 antibody (C-Term)**

2 Images

Overview

Quantity:	50 µg
Target:	SLFN12
Binding Specificity:	C-Term
Reactivity:	Human
Host:	Rabbit
Clonality:	Polyclonal
Conjugate:	This SLFN12 antibody is un-conjugated
Application:	Western Blotting (WB), ELISA, Immunohistochemistry (Paraffin-embedded Sections) (IHC (p))

Product Details

Immunogen:	12 amino acid peptide from near the carboxy terminus of human SLFN12.
Isotype:	IgG
Specificity:	Reacts with human SLFN12
Purification:	Antigen affinity purified

Target Details

Target:	SLFN12
Alternative Name:	SLFN12 ( <a href="#">SLFN12 Products</a> )

## Application Details

---

Application Notes: Working dilution: Optimal dilution should be determined by the end user.  
The following are guidelines only:  
IHC-P (2.5 - 5 µg/mL) WB (1 - 2 µg/mL)

---

Restrictions: For Research Use only

---

## Handling

---

Format: Liquid

---

Concentration: 1 mg/mL

---

Buffer: PBS, Sodium azide 0.02 %

---

Preservative: Sodium azide

---

Precaution of Use: This product contains Sodium azide: a POISONOUS AND HAZARDOUS SUBSTANCE which should be handled by trained staff only.

---

Storage: 4 °C/-20 °C

---

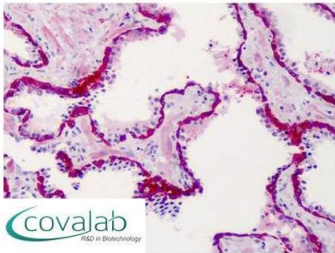
Storage Comment: Short term 4°C, long term aliquot and store at -20°C, avoid freeze thaw cycles. Store undiluted.

---

## Images

---

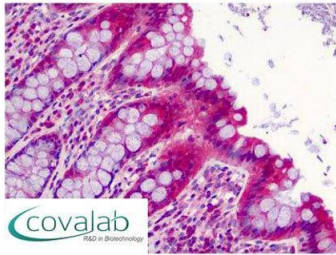
**IHC : SLFN12  
(C-Terminus) antibody**  
(pab73288)



Anti-SLFN12 antibody IHC staining of human prostate.  
Immunohistochemistry of formalin-fixed, paraffin-embedded tissue after heat-induced antigen retrieval. Antibody pab73288 concentration 2.5 µg/ml.

Image 1.

**IHC : SLFN12  
(C-Terminus) antibody**  
(pab73288)



Anti-SLFN12 antibody IHC staining of human colon.  
Immunohistochemistry of formalin-fixed,  
paraffin-embedded tissue after heat-induced antigen  
retrieval. Antibody pab73288 concentration 2.5 ug/ml.

Image 2.