

Datasheet for ABIN1739431
anti-SLIT1 antibody (AA 487-504)



[Go to Product page](#)

2 Images

Overview

Quantity:	50 µg
Target:	SLIT1
Binding Specificity:	AA 487-504
Reactivity:	Human, Mouse, Rat
Host:	Rabbit
Clonality:	Polyclonal
Application:	Western Blotting (WB), ELISA, Immunohistochemistry (Paraffin-embedded Sections) (IHC (p)), Immunofluorescence (IF)

Product Details

Immunogen:	Synthetic peptide (aa 487-504) from mouse SLIT1.
Isotype:	IgG
Specificity:	Reacts with mouse, human and rat SLIT-1
Purification:	Antigen affinity purified

Target Details

Target:	SLIT1
Alternative Name:	SLIT1 (SLIT1 Products)
Gene ID:	6585
Pathways:	Regulation of Cell Size

Application Details

Application Notes: Working dilution: Optimal dilution should be determined by the end user.
The following are guidelines only:
ELISA (1/10000 - 1/50000), IHC - P (5 µg/mL), WB (1/500 - 1/2000)

Restrictions: For Research Use only

Handling

Format: Liquid

Concentration: 1 mg/mL

Buffer: K phosphate 20 mM, NaCl 150 mM, pH 7.2, Sodium azide 0.01 %

Preservative: Sodium azide

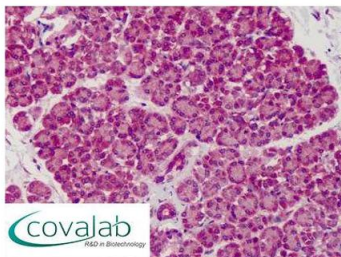
Precaution of Use: This product contains Sodium azide: a POISONOUS AND HAZARDOUS SUBSTANCE which should be handled by trained staff only.

Storage: 4 °C/-20 °C

Storage Comment: +4°C or -20°C, Avoid repeated freezing and thawing.

Images

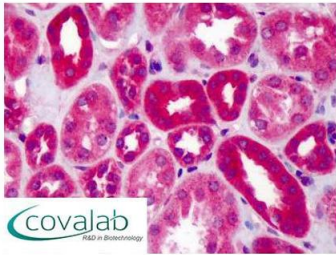
IHC : SLIT1
(aa487-504) antibody
(pab70177/#00015189)



Anti-SLIT1 antibody IHC staining of human pancreas.
Immunohistochemistry of formalin-fixed, paraffin-embedded tissue after heat-induced antigen retrieval. Antibody pab70177 concentration 5 µg/ml.

Image 1.

IHC : SLIT1
(aa487-504) antibody
(pab70177/#00015189)



Anti-SLIT1 antibody IHC staining of human kidney.
Immunohistochemistry of formalin-fixed,
paraffin-embedded tissue after heat-induced antigen
retrieval. Antibody pab70177 concentration 5 ug/ml.

Image 2.