



[Go to Product page](#)

Datasheet for ABIN1739712
anti-STEAP4 antibody (N-Term)

1 Image

Overview

Quantity:	50 µg
Target:	STEAP4
Binding Specificity:	N-Term
Reactivity:	Human
Host:	Rabbit
Clonality:	Polyclonal
Application:	Immunohistochemistry (Paraffin-embedded Sections) (IHC (p))

Product Details

Immunogen:	Synthetic 15 amino acid peptide from N-Terminus of human STEAP4. Percent identity with other species by BLAST analysis: Human (100%), Gorilla (93%), Monkey (93%), Marmoset (93%), Gibbon (87%), Mouse (87%), Bat (87%), Horse (87%), Hamster (80%)
Isotype:	IgG
Specificity:	Reacts with the N-terminus part of human STEAP4
Cross-Reactivity (Details):	BLAST analysis of the peptide immunogen showed no homology with other human proteins.
Purification:	Antigen affinity purified

Target Details

Target:	STEAP4
Alternative Name:	STEAP4 (STEAP4 Products)

Target Details

UniProt:	Q687X5
Pathways:	Transition Metal Ion Homeostasis

Application Details

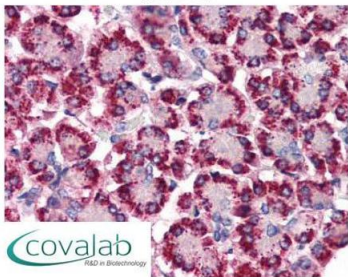
Application Notes:	Working dilution: IHC-P (2.5 µg/mL)
Restrictions:	For Research Use only

Handling

Format:	Liquid
Concentration:	1 mg/mL
Buffer:	PBS, Sodium azide 0.1 %
Preservative:	Sodium azide
Precaution of Use:	This product contains Sodium azide: a POISONOUS AND HAZARDOUS SUBSTANCE which should be handled by trained staff only.
Storage:	4 °C/-80 °C
Storage Comment:	Long term: -70°C, Short term: +4°C

Images

IHC : STEAP4 (N-Terminus) antibody (pab73435)



Anti-STEAP4 antibody pab73435 IHC staining of human pancreas. Immunohistochemistry of formalin-fixed, paraffin-embedded tissue after heat-induced antigen retrieval.

Image 1.