



[Go to Product page](#)

Datasheet for ABIN1739863

anti-TAAR6 antibody (3rd Cytoplasmic Domain)

1 Image

Overview

Quantity:	50 µg
Target:	TAAR6
Binding Specificity:	3rd Cytoplasmic Domain
Reactivity:	Human
Host:	Rabbit
Clonality:	Polyclonal
Conjugate:	This TAAR6 antibody is un-conjugated
Application:	Immunohistochemistry (Paraffin-embedded Sections) (IHC (p))

Product Details

Immunogen:	Synthetic 16 amino acid peptide from 3rd cytoplasmic domain of human TAAR6. Percent identity with other species by BLAST analysis: Human (100%), Chimpanzee (100%), Bovine (94%), Mouse (88%), Hamster (88%), Pig (88%), Monkey (81%), Horse (81%).
Isotype:	IgG
Specificity:	Reacts with the cytoplasmic domain of human TAAR6
Cross-Reactivity (Details):	BLAST analysis of the peptide immunogen showed no homology with other human proteins.
Purification:	Antigen affinity purified

Target Details

Target:	TAAR6
---------	-------

Target Details

Alternative Name: TAAR6 ([TAAR6 Products](#))

UniProt: [Q96R18](#)

Application Details

Application Notes: Working dilution: IHC-P (3 µg/mL - 7

Restrictions: For Research Use only

Handling

Format: Liquid

Concentration: 1 mg/mL

Buffer: PBS, Sodium azide 0.1 %

Preservative: Sodium azide

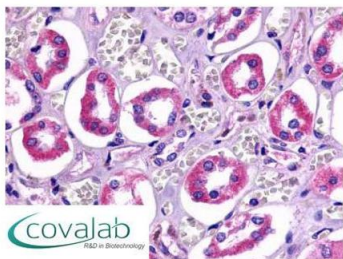
Precaution of Use: This product contains Sodium azide: a POISONOUS AND HAZARDOUS SUBSTANCE which should be handled by trained staff only.

Storage: 4 °C/-80 °C

Storage Comment: Long term: -70°C, Short term: +4°C

Images

IHC : TAAR6 (Cytoplasmic Domain) antibody (pab73476)



Anti-TAAR6 antibody pab73476 IHC staining of human kidney, renal tubules. Immunohistochemistry of formalin-fixed, paraffin-embedded tissue after heat-induced antigen retrieval.

Image 1.