



[Go to Product page](#)

Datasheet for ABIN1739905

anti-TARBP1 antibody (Internal Region)

2 Images

Overview

Quantity:	50 µg
Target:	TARBP1
Binding Specificity:	Internal Region
Reactivity:	Human, Mouse
Host:	Rabbit
Clonality:	Polyclonal
Application:	Western Blotting (WB), Immunohistochemistry (Paraffin-embedded Sections) (IHC (p))

Product Details

Immunogen:	Synthetic peptide from human TARBP1.
Isotype:	IgG
Specificity:	Reacts with human TARBP1
Cross-Reactivity:	Mouse (Murine)
Cross-Reactivity (Details):	Cross reacts with mouse protein.
Purification:	Antigen affinity purified

Target Details

Target:	TARBP1
Alternative Name:	TARBP1 (TARBP1 Products)
UniProt:	Q13395

Application Details

Application Notes: Working dilution: IHC-P (5 µg/mL), WB

Restrictions: For Research Use only

Handling

Format: Liquid

Concentration: 1 mg/mL

Buffer: PBS, Sodium azide 0.02 %

Preservative: Sodium azide

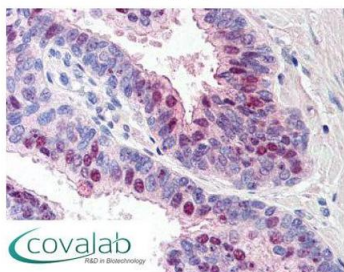
Precaution of Use: This product contains Sodium azide: a POISONOUS AND HAZARDOUS SUBSTANCE which should be handled by trained staff only.

Storage: 4 °C/-20 °C

Storage Comment: Short term 4°C, long term aliquot and store at -20°C, avoid freeze thaw cycles. Store undiluted.

Images

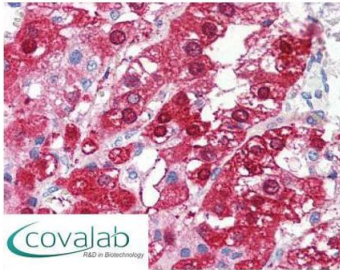
IHC : TARBP1 (Internal) antibody (pab73496)



Anti-TARBP1 antibody IHC staining of human prostate.
Immunohistochemistry of formalin-fixed, paraffin-embedded tissue after heat-induced antigen retrieval. Antibody pab73496 concentration 5 µg/ml.

Image 1.

IHC : TARBP1
(Internal) antibody
(pab73496)



Anti-TARBP1 antibody IHC staining of human adrenal.
Immunohistochemistry of formalin-fixed,
paraffin-embedded tissue after heat-induced antigen
retrieval. Antibody pab73496 concentration 5 ug/ml.

Image 2.