

Datasheet for ABIN1740143
anti-TM9SF4 antibody (Internal Region)



[Go to Product page](#)

2 Images

Overview

Quantity:	50 µg
Target:	TM9SF4
Binding Specificity:	Internal Region
Reactivity:	Human
Host:	Rabbit
Clonality:	Polyclonal
Application:	Immunohistochemistry (Paraffin-embedded Sections) (IHC (p))

Product Details

Immunogen:	Synthetic 15 amino acid peptide from internal region of human TM9SF4. Percent identity with other species by BLAST analysis: Human (100%), Gorilla (100%), Orangutan (100%), Gibbon (100%), Monkey (100%), Marmoset (93%), Elephant (93%), Dog (93%)
Isotype:	IgG
Specificity:	Reacts with human TM9SF4
Cross-Reactivity (Details):	BLAST analysis of the peptide immunogen showed no homology with other human proteins.
Purification:	Antigen affinity purified

Target Details

Target:	TM9SF4
Alternative Name:	TM9SF4 (TM9SF4 Products)

Target Details

UniProt: [Q92544](#)

Application Details

Application Notes: Working dilution: IHC-P (5 µg/mL)

Restrictions: For Research Use only

Handling

Format: Liquid

Concentration: 1 mg/mL

Buffer: PBS, Sodium azide 0.1 %

Preservative: Sodium azide

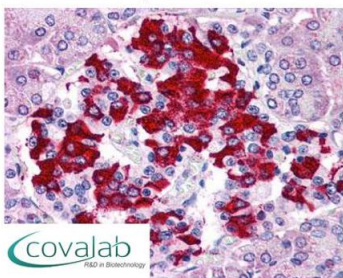
Precaution of Use: This product contains Sodium azide: a POISONOUS AND HAZARDOUS SUBSTANCE which should be handled by trained staff only.

Storage: 4 °C/-80 °C

Storage Comment: Long term: -70°C, Short term: +4°C

Images

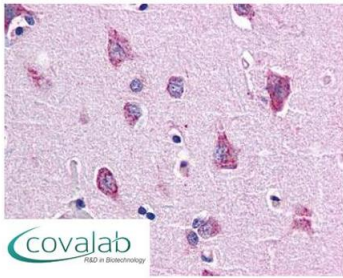
IHC : TM9SF4 (Internal) antibody (pab73656)



Anti-TM9SF4 antibody pab73656 IHC staining of human pancreas. Immunohistochemistry of formalin-fixed, paraffin-embedded tissue after heat-induced antigen retrieval.

Image 1.

**IHC : TM9SF4
(Internal) antibody**
(pab73656)



Anti-TM9SF4 antibody pab73656 IHC staining of human brain, cortex. Immunohistochemistry of formalin-fixed, paraffin-embedded tissue after heat-induced antigen retrieval.

Image 2.