

## Datasheet for ABIN1741111 **anti-PINK1 antibody (AA 112-496) (Atto 594)**

### 3 Images

[Go to Product page](#)

#### Overview

Quantity:	100 µg
Target:	PINK1
Binding Specificity:	AA 112-496
Reactivity:	Human
Host:	Mouse
Clonality:	Monoclonal
Conjugate:	This PINK1 antibody is conjugated to Atto 594
Application:	Western Blotting (WB), Immunohistochemistry (IHC), Immunofluorescence (IF), Immunocytochemistry (ICC)

#### Product Details

Immunogen:	Fusion protein amino acids 112-496 (cytoplasmic C-terminus) of human PINK1. 82% identical to rat and 81% identical to mouse. >30% identity with DMPK.
Clone:	S4-15
Isotype:	IgG1
Specificity:	Detects ~50 kDa.
Cross-Reactivity:	Human, Mouse, Rat
Purification:	Protein G Purified

## Target Details

Target:	PINK1
Alternative Name:	PINK1 ( <a href="#">PINK1 Products</a> )
Background:	<p>PINK1 (PTEN induced putative kinase 1) is a mitochondrial serine/threonine kinase which maintains mitochondrial function/integrity, provides protection against mitochondrial dysfunction during cellular stress, potentially by phosphorylating mitochondrial proteins, and is involved in the clearance of damaged mitochondria via selective autophagy (mitophagy). PINK1 is synthesized as a 63 kD protein which undergoes proteolytic processing to generate at least two cleaved forms (55 kD and 42 kD). PINK1 and its substrates have been found in the cytosol as well as in different sub-mitochondrial compartments, and according to the recent reports, PINK1 may be targeted to OMM (outer mitochondrial membrane) with its kinase domain facing the cytosol, providing a possible explanation for the observed physical interaction with the cytosolic E3 ubiquitin ligase Parkin. Defective PINK1 may cause alterations in processing, stability, localization and activity as well as binding to substrates/interaction-partners which ultimately leads to differential effects on mitochondrial function and morphology. Mutations in PINK1 are linked to autosomal recessive early onset Parkinson's disease, and are associated with loss of protective function, mitochondrial dysfunction, aggregation of alpha-synuclein, as well as proteasome dysfunction.</p>
Gene ID:	65018
NCBI Accession:	<a href="#">NP_115785</a>
UniProt:	<a href="#">Q9BXM7</a>
Pathways:	<a href="#">Autophagy</a>

## Application Details

Application Notes:	<ul style="list-style-type: none"><li>• WB (1:1000)</li><li>• optimal dilutions for assays should be determined by the user.</li></ul>
Comment:	1 µg/ml of ABIN1741111 was sufficient for detection of PINK1 in 20 µg of rat brain lysate by colorimetric immunoblot analysis using Goat anti-mouse IgG:HRP as the secondary antibody.
Restrictions:	For Research Use only

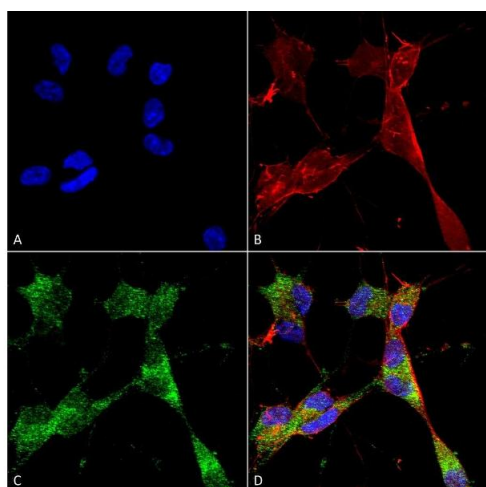
## Handling

Format:	Liquid
Concentration:	1 mg/mL

## Handling

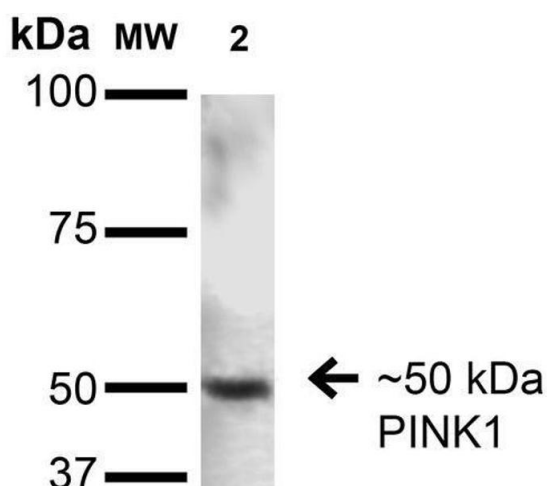
Buffer:	PBS pH 7.4, 50 % glycerol, 0.1 % sodium azide, Storage buffer may change when conjugated
Preservative:	Sodium azide
Precaution of Use:	This product contains Sodium azide: a POISONOUS AND HAZARDOUS SUBSTANCE which should be handled by trained staff only.
Storage:	4 °C
Storage Comment:	Conjugated antibodies should be stored at 4°C

## Images



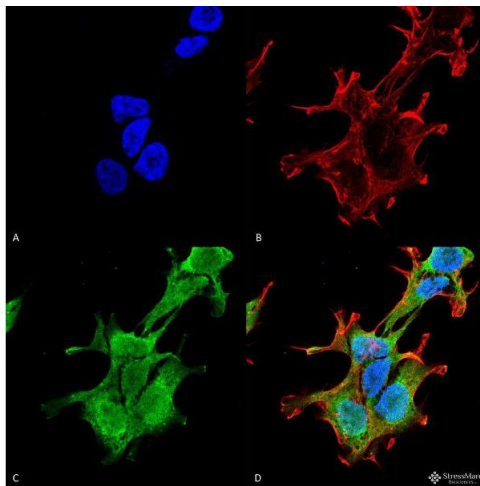
### Immunocytochemistry

**Image 1.** Immunocytochemistry/Immunofluorescence analysis using Mouse Anti-PINK1 Monoclonal Antibody, Clone S4-15 (ABIN1741111). Tissue: Neuroblastoma cells (SH-SY5Y). Species: Human. Fixation: 4 % PFA for 15 min. Primary Antibody: Mouse Anti-PINK1 Monoclonal Antibody (ABIN1741111) at 1:50 for overnight at 4 °C with slow rocking. Secondary Antibody: AlexaFluor 488 at 1:1000 for 1 hour at RT. Counterstain: Phalloidin-iFluor 647 (red) F-Actin stain, Hoechst (blue) nuclear stain at 1:800, 1.6 mM for 20 min at RT. (A) Hoechst (blue) nuclear stain. (B) Phalloidin-iFluor 647 (red) F-Actin stain. (C) PINK1 Antibody (D) Composite.



### Western Blotting

**Image 2.** Western Blot analysis of Rat Brain showing detection of ~50 kDa PINK1 protein using Mouse Anti-PINK1 Monoclonal Antibody, Clone S4-15. Lane 1: Molecular Weight Ladder. Lane 2: Rat Brain. Load: 15 µg. Block: 2% BSA and 2% Skim Milk in 1X TBST. Primary Antibody: Mouse Anti-PINK1 Monoclonal Antibody at 1:200 for 16 hours at 4°C. Secondary Antibody: Goat Anti-Mouse IgG: HRP at 1:1000 for 1 hour RT. Color Development: ECL solution for 6 min in RT. Predicted/Observed Size: ~50 kDa.



#### Immunofluorescence (fixed cells)

**Image 3.** Immunocytochemistry/Immunofluorescence analysis using Mouse Anti-PINK1 Monoclonal Antibody, Clone S4-15 . Tissue: Neuroblastoma cell line (SK-N-BE). Species: Human. Fixation: 4% Formaldehyde for 15 min at RT. Primary Antibody: Mouse Anti-PINK1 Monoclonal Antibody at 1:100 for 60 min at RT. Secondary Antibody: Goat Anti-Mouse ATTO 488 at 1:100 for 60 min at RT. Counterstain: Phalloidin Texas Red F-Actin stain; DAPI (blue) nuclear stain at 1:1000; 1:5000 for 60 min RT, 5 min RT. Localization: Cytoplasm. Magnification: 60X. (A) DAPI (blue) nuclear stain (B) Phalloidin Texas Red F-Actin stain (C) PINK1 Antibody (D) Composite.