

Datasheet for ABIN1741532

**anti-Ataxin 1 antibody (AA 746-761) (Biotin)****3** Images[Go to Product page](#)

## Overview

Quantity:	100 µg
Target:	Ataxin 1 (ATXN1)
Binding Specificity:	AA 746-761
Reactivity:	Mouse
Host:	Mouse
Clonality:	Monoclonal
Conjugate:	This Ataxin 1 antibody is conjugated to Biotin
Application:	Western Blotting (WB), Immunofluorescence (IF), Immunocytochemistry (ICC)

## Product Details

Immunogen:	Synthetic peptide amino acids 746-761 (RKRRWSAPETRKLEKS) of mouse ataxin-1. Rat: 93% identity (15/16 amino acids identical). Human: 87% identity (14/16 amino acids identical).
Clone:	S65-37
Isotype:	IgG1
Specificity:	Detects ~85 kDa. No cross-reactivity against phosphor S751-Ataxin-1. Minimal cross-reactivity against S751A mutant of Ataxin-1 by ELISA and immunofluorescence and negative by immunoblot.
Cross-Reactivity:	Human, Mouse, Rat
Purification:	Protein G Purified

## Target Details

Target:	Ataxin 1 (ATXN1)
Alternative Name:	Ataxin 1 ( <a href="#">ATXN1 Products</a> )
Background:	Ataxin-1 is a member of the ATXN1 protein family and contains a single AXH domain. It is a neurodegenerative disorder protein thought to have a role in the metabolism of RNA as it has been shown to localize to the RNA and transcription dependent inclusions within the nucleus. A mutation of Ataxin-1 is the cause of spinocerebellar ataxia type-1 (SCA1), a progressive, neurodegenerative disease that is autosomal dominant and primarily affects the Purkinje cells found in brain stem neuronal populations and the cerebellum. Expression of Ataxin-1 is almost ubiquitous, except in the brain where it is isolated to populations of neurons.
Gene ID:	20238
NCBI Accession:	<a href="#">NP_001186233</a>
UniProt:	<a href="#">P54254</a>
Pathways:	<a href="#">Synaptic Membrane</a>

## Application Details

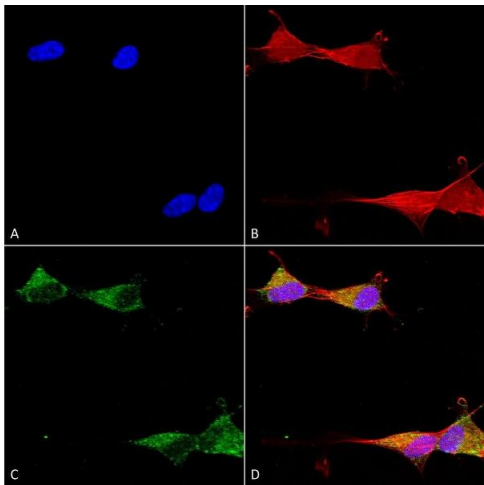
Application Notes:	<ul style="list-style-type: none"><li>• WB (1:1000)</li><li>• optimal dilutions for assays should be determined by the user.</li></ul>
Comment:	1 µg/ml of ABIN1741532 was sufficient for detection of Ataxin 1 in 20 µg of COS cells transiently transfected with Ataxin-1 lysate by colorimetric immunoblot analysis using Goat anti-mouse IgG:HRP as the secondary antibody.
Restrictions:	For Research Use only

## Handling

Format:	Liquid
Concentration:	1 mg/mL
Buffer:	PBS pH 7.4, 50 % glycerol, 0.1 % sodium azide, Storage buffer may change when conjugated
Preservative:	Sodium azide
Precaution of Use:	This product contains Sodium azide: a POISONOUS AND HAZARDOUS SUBSTANCE which should be handled by trained staff only.
Storage:	4 °C

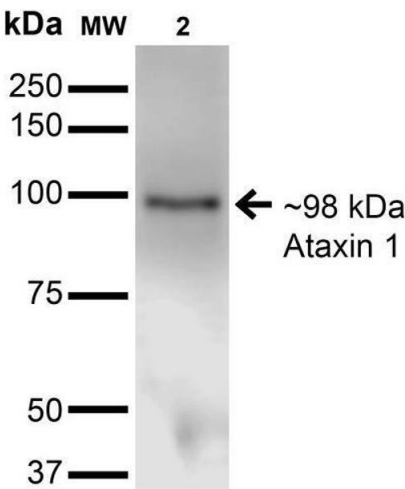
Storage Comment: Conjugated antibodies should be stored at 4°C

Validation report #029822 for Western Blotting (WB)



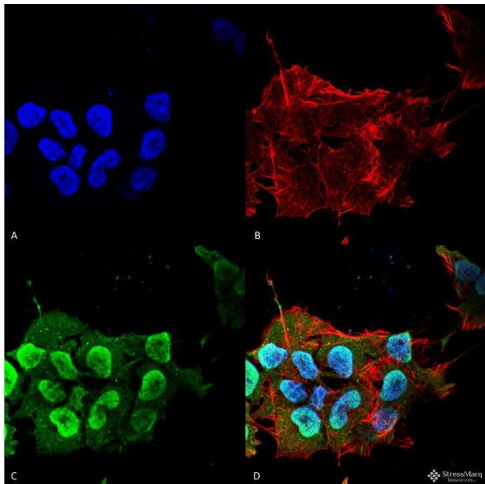
Immunocytochemistry

**Image 1.** Immunocytochemistry/Immunofluorescence analysis using Mouse Anti-Ataxin 1 Monoclonal Antibody, Clone S65-37 (ABIN1741532). Tissue: Neuroblastoma cells (SH-SY5Y). Species: Human. Fixation: 4 % PFA for 15 min. Primary Antibody: Mouse Anti-Ataxin 1 Monoclonal Antibody (ABIN1741532) at 1:50 for overnight at 4°C with slow rocking. Secondary Antibody: AlexaFluor 488 at 1:1000 for 1 hour at RT. Counterstain: Phalloidin-iFluor 647 (red) F-Actin stain, Hoechst (blue) nuclear stain at 1:800, 1.6 mM for 20 min at RT. (A) Hoechst (blue) nuclear stain. (B) Phalloidin-iFluor 647 (red) F-Actin stain. (C) Ataxin 1 Antibody (D) Composite.



Western Blotting

**Image 2.** Western Blot analysis of Monkey COS-1 cells transfected with Ataxin- 1 showing detection of ~85 kDa Ataxin 1 protein using Mouse Anti-Ataxin 1 Monoclonal Antibody, Clone S65-37 . Lane 1: Molecular Weight Ladder. Lane 2: Monkey COS-1 cells transfected with Ataxin- 1. Load: 15 µg. Block: 2% BSA and 2% Skim Milk in 1X TBST. Primary Antibody: Mouse Anti-Ataxin 1 Monoclonal Antibody at 1:200 for 16 hours at 4°C. Secondary Antibody: Goat Anti-Mouse IgG: HRP at 1:1000 for 1 hour RT. Color Development: ECL solution for 6 min in RT. Predicted/Observed Size: ~85 kDa.



**Immunofluorescence (fixed cells)**

**Image 3.** Immunocytochemistry/Immunofluorescence analysis using Mouse Anti-Ataxin 1 Monoclonal Antibody, Clone S65-37 . Tissue: Neuroblastoma cell line (SK-N-BE). Species: Human. Fixation: 4% Formaldehyde for 15 min at RT. Primary Antibody: Mouse Anti-Ataxin 1 Monoclonal Antibody at 1:100 for 60 min at RT. Secondary Antibody: Goat Anti-Mouse ATTO 488 at 1:100 for 60 min at RT. Counterstain: Phalloidin Texas Red F-Actin stain; DAPI (blue) nuclear stain at 1:1000; 1:5000 for 60 min RT, 5 min RT. Localization: Cytoplasm, Nucleus. Magnification: 60X. (A) DAPI (blue) nuclear stain (B) Phalloidin Texas Red F-Actin stain (C) Ataxin 1 Antibody (D) Composite.