

Datasheet for ABIN1742189  
**anti-Synaptogyrin 1 antibody (AA 220-234)**

4 Images

1 Publication

[Go to Product page](#)

## Overview

Quantity:	200 µL
Target:	Synaptogyrin 1 (SYNGR1)
Binding Specificity:	AA 220-234
Reactivity:	Human, Mouse, Rat, Hamster, Chicken
Host:	Rabbit
Clonality:	Polyclonal
Application:	Western Blotting (WB), ELISA, Immunohistochemistry (IHC), Immunocytochemistry (ICC)

## Product Details

Immunogen:	Synthetic peptide NAFDAEPQGYQSQGY (aa 220-234 in rat synaptogyrin 1) coupled to key-hole limpet hemocyanin via an added N-terminal cysteine residue.
Specificity:	Specific for synaptogyrin 1.
Purification:	antiserum

## Target Details

Target:	Synaptogyrin 1 (SYNGR1)
Alternative Name:	Synaptogyrin 1 ( <a href="#">SYNGR1 Products</a> )
Background:	Synonyms: p29
Pathways:	<a href="#">Regulation of long-term Neuronal Synaptic Plasticity</a>

## Application Details

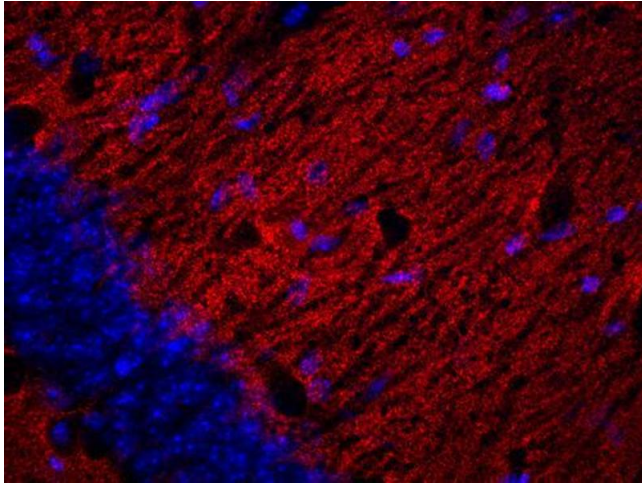
Application Notes:	WB: 1 : 1000 up to 1 : 5000 (AP staining) IP: not tested yet ICC: 1 : 100 up to 1 : 500 IHC: 1 : 200
Comment:	ELISA: Suitable as detector antibody for sandwich-ELISA with ABIN1742188 as capture antibody (protocol for sandwich-ELISA).
Restrictions:	For Research Use only

## Handling

Format:	Liquid
Buffer:	PBS
Handling Advice:	Crude antisera are more robust than monoclonals. With anti-microbials added, they may be stored at 4 °C.  Serum does not contain active proteases, in fact, serum itself contains a powerful cocktail of protease inhibitors. Frozen storage (-20 °C), however, is preferable.
Storage:	4 °C/-20 °C
Storage Comment:	Unlabeled antibodies are stable in this form without loss of quality at ambient temperatures for several weeks or even months. They can be stored at 4 °C for several years.

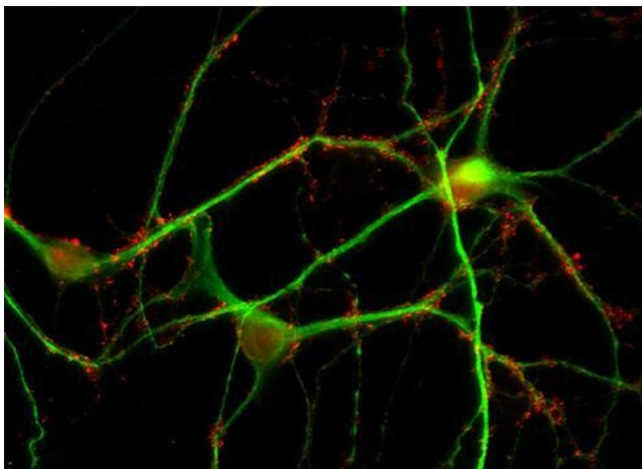
## Publications

Product cited in:	Wiedemann, Giehl, Almo, Fedorov, Girvin, Steinberger, Rüdiger, Ortner, Sippl, Dolecek, Kraft, Jockusch, Valenta: "Molecular and structural analysis of a continuous birch profilin epitope defined by a monoclonal antibody." in: <b>The Journal of biological chemistry</b> , Vol. 271, Issue 47, pp. 29915-21, (1997) ( <a href="#">PubMed</a> ).
-------------------	---



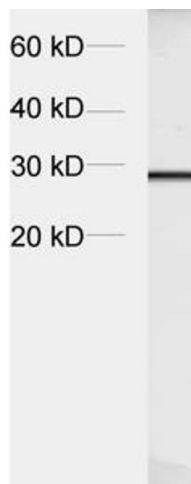
#### Immunohistochemistry

**Image 1.** Indirect immunofluorescence labeling of a PFA fixed mouse hippocampus section (dilution 1 : 200; red). Nuclei have been visualized by DAPI staining (blue).



#### Immunocytochemistry

**Image 2.** Indirect immunofluorescence labeling of PFA fixed rat hippocampus neurons with anti-synaptogyrin (dilution 1 : 500; red) and anti-MAP 2 (cat. no. 188 011, dilution: 1 : 500; green).



#### Western Blotting

**Image 3.** dilution: 1 : 5000, sample: crude synaptosomal fraction of rat brain (P2)

Please check the [product details page](#) for more images. Overall 4 images are available for ABIN1742189.