



[Go to Product page](#)

Datasheet for ABIN1742195

## anti-VAMP8 antibody (Cytoplasmic Domain)

2 Images

4 Publications

### Overview

Quantity:	50 µg
Target:	VAMP8
Binding Specificity:	AA 1-74, Cytoplasmic Domain
Reactivity:	Human, Rat, Mouse
Host:	Rabbit
Clonality:	Polyclonal
Application:	Western Blotting (WB), Immunocytochemistry (ICC)

### Product Details

Immunogen:	Recombinant cytoplasmic domain of rat endobrevin (aa 1-74).
Purification:	Affinity purified with the immunogen. Rabbit serum albumin was added for stabilization.

### Target Details

Target:	VAMP8
Alternative Name:	Endobrevin ( <a href="#">VAMP8 Products</a> )
Background:	Synonyms: VAMP 8

### Application Details

Application Notes:	WB: 1 : 1000 (AP staining) IP: not tested yet ICC: 1 : 100 up to 1 : 500
--------------------	--

## Application Details

---

IHC: not tested yet

Restrictions: For Research Use only

## Handling

---

Format: Lyophilized

Reconstitution: For reconstitution add 50  $\mu$ L H<sub>2</sub>O to get a 1mg/ml solution of antibody in PBS. Then aliquot and store at -20 °C until use.

Buffer: PBS

Handling Advice: Affinity purified antibodies are less robust than antisera, since protease inhibitors are also removed during purification. Hence, storage at 4 °C for prolonged periods (i.e. several weeks), is not recommended.

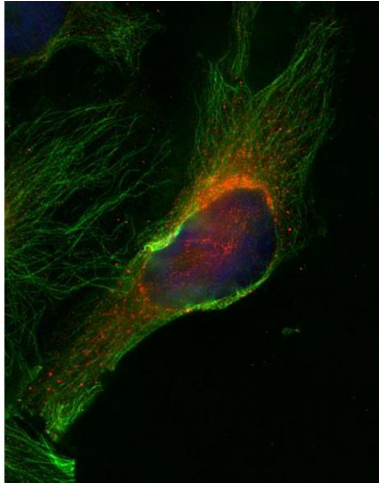
Storage: -20 °C

Storage Comment: Unlabeled lyophilized antibodies are stable in this form without loss of quality at ambient temperatures for several weeks or even months. They can be stored at 4°C for several years. Lyophilized antibodies must not be stored in the freezer, they may be destroyed!

## Publications

---

Product cited in: Wiedemann, Giehl, Almo, Fedorov, Girvin, Steinberger, Rüdiger, Ortner, Sippl, Dolecek, Kraft, Jockusch, Valenta: "Molecular and structural analysis of a continuous birch profilin epitope defined by a monoclonal antibody." in: **The Journal of biological chemistry**, Vol. 271, Issue 47, pp. 29915-21, (1997) ([PubMed](#)).



### Immunocytochemistry

**Image 1.** Indirect immunofluorescence on HELA cells (dilution 1 : 500; red) in combination with anti- $\alpha$ -tubulin (cat. no. 302 201, dilution 1 : 500; green). Nuclei are visualized by DAPI staining (blue).



### Western Blotting

**Image 2.** dilution: 1 : 1000, sample: HELA cell lysate