

Datasheet for ABIN1742196  
**anti-SYT1/2 antibody (Cytoplasmic)**[Go to Product page](#)

4 Images

1 Publication

## Overview

Quantity:	200 µL
Target:	SYT1/2
Binding Specificity:	AA 120-131, Cytoplasmic
Reactivity:	Human, Mouse, Rat, Chicken, Cow, Goldfish
Host:	Rabbit
Clonality:	Polyclonal
Application:	Western Blotting (WB), ELISA, Immunohistochemistry (IHC), Immunocytochemistry (ICC), Immunoprecipitation (IP)

## Product Details

Immunogen:	Synthetic peptide DDDAETGLTDGE (aa 120-131 in rat synaptotagmin 1) coupled to key-hole limpet hemocyanin via an added N-terminal cysteine residue.
Cross-Reactivity (Details):	Some cross-reactivity to synaptotagmin 2.
Purification:	antiserum

## Target Details

Target:	SYT1/2
Alternative Name:	Synaptotagmin 1, 2 ( <a href="#">SYT1/2 Products</a> )
Background:	Synonyms: p65

## Application Details

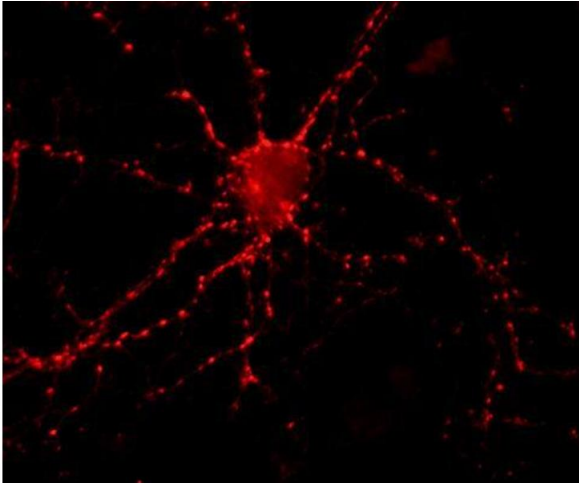
Application Notes:	WB: 1 : 1000 (AP staining) ICC: 1 : 500 up to 1 : 1000 IHC: 1 : 200 up to 1 : 500
Comment:	ELISA: Suitable as detector antibody for sandwich-ELISA as capture antibodies (protocol for sandwich-ELISA).
Restrictions:	For Research Use only

## Handling

Format:	Liquid
Buffer:	PBS
Handling Advice:	Crude antisera are more robust than monoclonals. With anti-microbials added, they may be stored at 4 °C.  Serum does not contain active proteases, in fact, serum itself contains a powerful cocktail of protease inhibitors. Frozen storage (-20 °C), however, is preferable.
Storage:	4 °C/-20 °C
Storage Comment:	Unlabeled antibodies are stable in this form without loss of quality at ambient temperatures for several weeks or even months. They can be stored at 4 °C for several years.

## Publications

Product cited in:	Wiedemann, Giehl, Almo, Fedorov, Girvin, Steinberger, Rüdiger, Ortner, Sippl, Dolecek, Kraft, Jockusch, Valenta: "Molecular and structural analysis of a continuous birch profilin epitope defined by a monoclonal antibody." in: <b>The Journal of biological chemistry</b> , Vol. 271, Issue 47, pp. 29915-21, (1997) ( <a href="#">PubMed</a> ).
-------------------	---



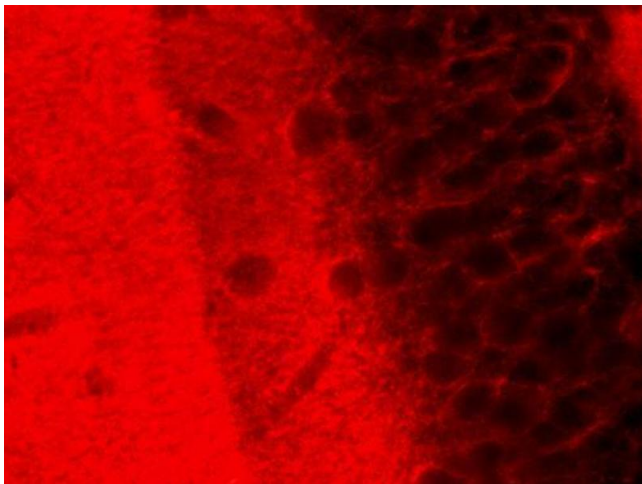
#### Immunocytochemistry

**Image 1.** Indirect immunostaining of hippocampus neurons (dilution 1 : 1000)



#### Western Blotting

**Image 2.** dilution: 1 : 1000, sample: crude synaptosomal fraction of rat brain (P2)



#### Immunohistochemistry

**Image 3.** Indirect immunohistochemistry of a mouse hippocampus section (dilution 1 : 500). Positive cells were revealed with a Cy3 conjugated secondary antibody.

Please check the [product details page](#) for more images. Overall 4 images are available for ABIN1742196.