



[Go to Product page](#)

Datasheet for ABIN1742201

## anti-SYT1 antibody (Luminal Region)

2 Images

1 Publication

### Overview

Quantity:	50 µg
Target:	SYT1
Binding Specificity:	AA 1-8, Luminal Region
Reactivity:	Rat, Mouse
Host:	Guinea Pig
Clonality:	Polyclonal
Application:	Western Blotting (WB), Immunocytochemistry (ICC)

### Product Details

Immunogen:	Synthetic peptide MVSASRPE (aa 1-8 in mouse synaptotagmin 1) coupled to key-hole limpet hemocyanin via an added C-terminal cysteine residue.
Specificity:	Specific for synaptotagmin 1
Cross-Reactivity (Details):	no cross-reactivity to synaptotagmin 2.
Purification:	Affinity purified with the immunogen. Guinea pig serum albumin was added for stabilization.

### Target Details

Target:	SYT1
Alternative Name:	Synaptotagmin 1 ( <a href="#">SYT1 Products</a> )
Background:	Synonyms: p65
Pathways:	<a href="#">Synaptic Vesicle Exocytosis</a> , <a href="#">Dicarboxylic Acid Transport</a>

## Application Details

---

Application Notes:	WB: 1 : 2000 (AP staining) IP: not tested yet IHC: not tested yet
Comment:	This antibody can be used for labeling of recycling synaptic vesicles by adding to living neurons or as a marker for exocytosis in isolated nerve terminals.
Restrictions:	For Research Use only

## Handling

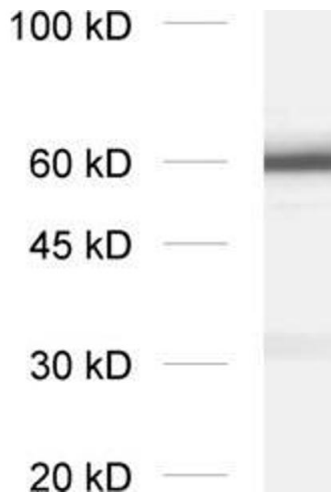
---

Format:	Lyophilized
Reconstitution:	For reconstitution add 50 µL H <sub>2</sub> O to get a 1mg/ml solution of antibody in PBS. Add 1:1 (v/v) glycerol, then aliquot and store at -20 °C until use.
Buffer:	PBS
Handling Advice:	Affinity purified antibodies are less robust than antisera, since protease inhibitors are also removed during purification. Hence, storage at 4 °C for prolonged periods (i.e. several weeks), is not recommended.
Storage:	-20 °C
Storage Comment:	Unlabeled lyophilized antibodies are stable in this form without loss of quality at ambient temperatures for several weeks or even months. They can be stored at 4°C for several years. Lyophilized antibodies must not be stored in the freezer, they may be destroyed!

## Publications

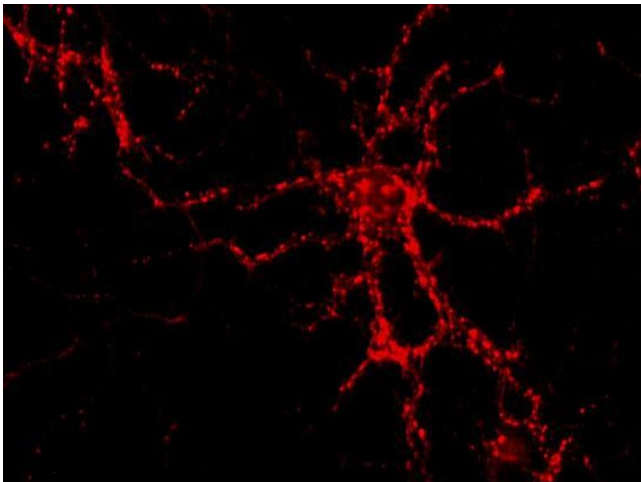
---

Product cited in:	Wiedemann, Giehl, Almo, Fedorov, Girvin, Steinberger, Rüdiger, Ortner, Sippl, Dolecek, Kraft, Jockusch, Valenta: "Molecular and structural analysis of a continuous birch profilin epitope defined by a monoclonal antibody." in: <b>The Journal of biological chemistry</b> , Vol. 271, Issue 47, pp. 29915-21, (1997) ( <a href="#">PubMed</a> ).
-------------------	---



#### Western Blotting

**Image 1.** dilution: 1 : 2000, sample: crude synaptosomal fraction of rat brain (P2)



#### Immunocytochemistry

**Image 2.** Immunocytochemistry on PFA fixed cultured hippocampus neurons.