

Datasheet for ABIN1742214

anti-RAB5 antibody**3** Images**1** Publication[Go to Product page](#)

Overview

Quantity:	100 µL
Target:	RAB5 (RAB5A)
Reactivity:	Human, Mouse, Rat
Host:	Mouse
Clonality:	Monoclonal
Application:	Western Blotting (WB), Immunocytochemistry (ICC), Immunoprecipitation (IP)

Product Details

Clone:	621-4
Isotype:	IgG2a
Purification:	purified IgG

Target Details

Target:	RAB5 (RAB5A)
Alternative Name:	Rab 5 (RAB5A Products)
Pathways:	Smooth Muscle Cell Migration, Regulation of long-term Neuronal Synaptic Plasticity

Application Details

Application Notes:	Optimal working dilution should be determined by the investigator. This product is not tested in IHC yet.
Restrictions:	For Research Use only

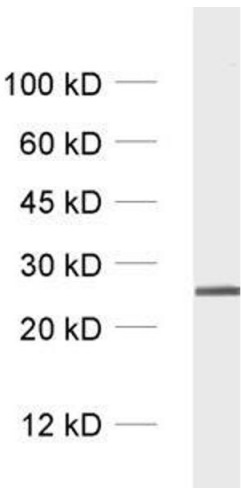
Handling

Format:	Lyophilized
Buffer:	PBS
Handling Advice:	Do not store diluted antibody solutions unless you add detergent or carrier proteins such as goat serum, BSA or others. IgG sticks to glass and plastic. Any IgG solution below 0.1 mg/mL protein will quickly adsorb and denature and thus lose activity! Repetitive freeze-thawing of dilute purified IgG is almost certain to lead to substantial losses.
Storage:	-20 °C
Storage Comment:	Unlabeled antibodies are stable in this form without loss of quality at ambient temperatures for several weeks or even months. They can be stored at 4 °C for several years.

Publications

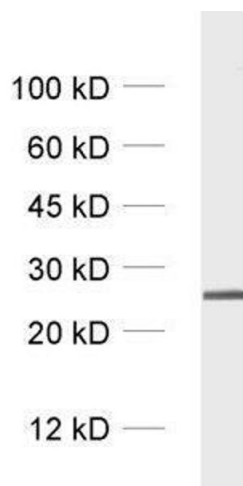
Product cited in:	Seipold, Damme, Prox, Rabe, Kasperek, Sedlacek, Altmeyen, Willem, Boland, Glatzel, Saftig: "Tetraspanin 3: A central endocytic membrane component regulating the expression of ADAM10, presenilin and the amyloid precursor protein." in: Biochimica et biophysica acta , Vol. 1864, Issue 1, pp. 217-230, (2016) (PubMed).
-------------------	--

Images



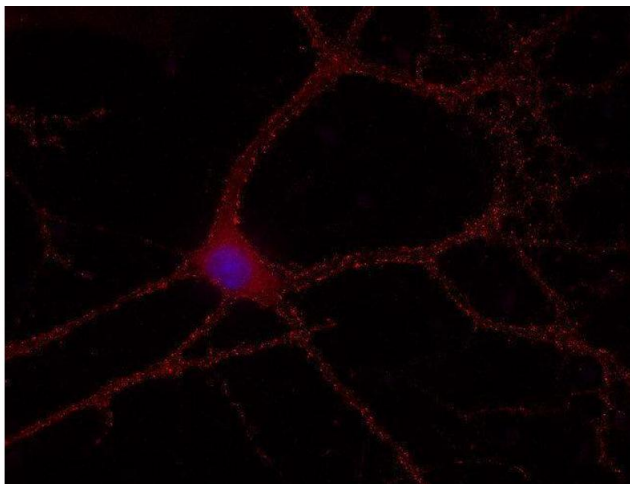
Western Blotting

Image 1.



Western Blotting

Image 2. dilution: 1 : 1000, sample: crude synaptosomal fraction of rat brain (P2)



Immunocytochemistry

Image 3. Indirect immunostaining of methanol fixed hippocampus neurons (dilution 1 : 500; red). Nuclei have been visualized by DAPI staining (blue).