



[Go to Product page](#)

Datasheet for ABIN1742223

anti-Syntaxin 6 antibody (AA 1-235)

2 Images

8 Publications

Overview

Quantity:	200 µL
Target:	Syntaxin 6 (STX6)
Binding Specificity:	AA 1-235
Reactivity:	Human, Mouse, Rat, Chicken, Hamster
Host:	Rabbit
Clonality:	Polyclonal
Application:	Western Blotting (WB), Immunoprecipitation (IP), Immunocytochemistry (ICC)

Product Details

Immunogen:	Recombinant human syntaxin 6 (aa 1-235).
Specificity:	Specific for syntaxin 6.
Purification:	antiserum

Target Details

Target:	Syntaxin 6 (STX6)
Alternative Name:	Syntaxin 6 (STX6 Products)
Pathways:	Synaptic Vesicle Exocytosis

Application Details

Application Notes:	WB: 1 : 1000 up to 1 : 10000 (AP staining)
--------------------	--

Application Details

ICC: 1 : 500

IHC: not tested yet

Restrictions: For Research Use only

Handling

Format: Liquid

Buffer: PBS

Handling Advice: Crude antisera are more robust than monoclonals. With anti-microbials added, they may be stored at 4 °C.
Serum does not contain active proteases, in fact, serum itself contains a powerful cocktail of protease inhibitors. Frozen storage (-20 °C), however, is preferable.

Storage: 4 °C/-20 °C

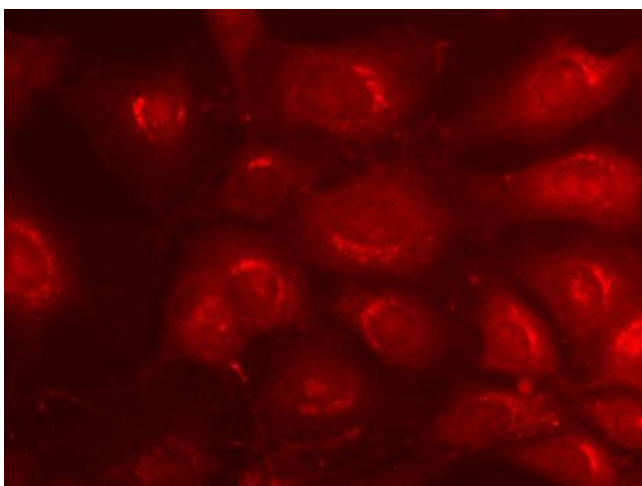
Storage Comment: Unlabeled antibodies are stable in this form without loss of quality at ambient temperatures for several weeks or even months. They can be stored at 4 °C for several years.

Publications

Product cited in: Yeo, Ting, Brena, Koh, Chen, Toh, Lim, Oh, Lee: "Genome-Wide Transcriptome and Binding Sites Analyses Identify Early FOX Expressions for Enhancing Cardiomyogenesis Efficiency of hESC Cultures." in: **Scientific reports**, Vol. 6, pp. 31068, (2016) ([PubMed](#)).

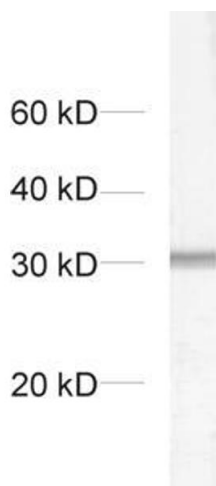
There are more publications referencing this product on: [Product page](#)

Validation report #029822 for Western Blotting (WB)



Immunocytochemistry

Image 1. Indirect immunofluorescence on 3T3 cells (dilution 1 : 500) in combination with a Cy3 labeled secondary antibody (dilution 1 : 500).



Western Blotting

Image 2. dilution: 1 : 1000, sample: crude synaptosomal fraction of rat brain (P2)