

Datasheet for ABIN1742224

anti-Syntaxin 7 antibody (Cytoplasmic Domain)

3 Images

12 Publications

[Go to Product page](#)

Overview

Quantity:	200 µL
Target:	Syntaxin 7 (STX7)
Binding Specificity:	AA 1-236, Cytoplasmic Domain
Reactivity:	Human, Mouse, Rat
Host:	Rabbit
Clonality:	Polyclonal
Application:	Western Blotting (WB), Immunoprecipitation (IP), Immunocytochemistry (ICC)

Product Details

Immunogen:	Recombinant cytoplasmic domain of rat syntaxin 7 (aa 1-236).
Specificity:	Specific for syntaxin 7.
Purification:	antiserum

Target Details

Target:	Syntaxin 7 (STX7)
Alternative Name:	Syntaxin 7 (STX7 Products)
Pathways:	Synaptic Vesicle Exocytosis

Application Details

Application Notes:	WB: 1 : 1000 up to 1 : 5000 (AP staining)
--------------------	---

Application Details

	ICC: 1 : 100
	IHC: not tested yet
Restrictions:	For Research Use only

Handling

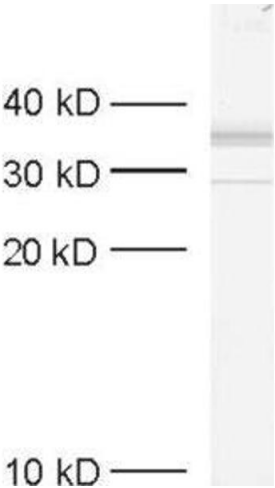
Format:	Liquid
Buffer:	PBS
Handling Advice:	<p>Crude antisera are more robust than monoclonals. With anti-microbials added, they may be stored at 4 °C.</p> <p>Serum does not contain active proteases, in fact, serum itself contains a powerful cocktail of protease inhibitors. Frozen storage (-20 °C), however, is preferable.</p>
Storage:	4 °C/-20 °C
Storage Comment:	Unlabeled antibodies are stable in this form without loss of quality at ambient temperatures for several weeks or even months. They can be stored at 4 °C for several years.

Publications

Product cited in:	Keim, Johnson, Wheelock, Wahl: "Generation and characterization of monoclonal antibodies against the proregion of human desmoglein-2." in: Hybridoma (2005) , Vol. 27, Issue 4, pp. 249-58, (2008) (PubMed).
-------------------	---

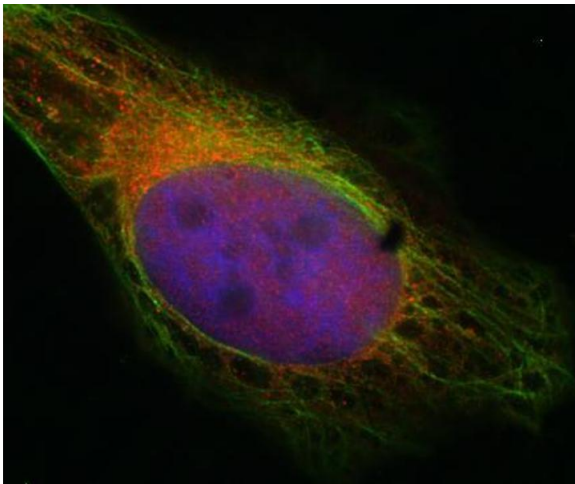
There are more publications referencing this product on: [Product page](#)

Images



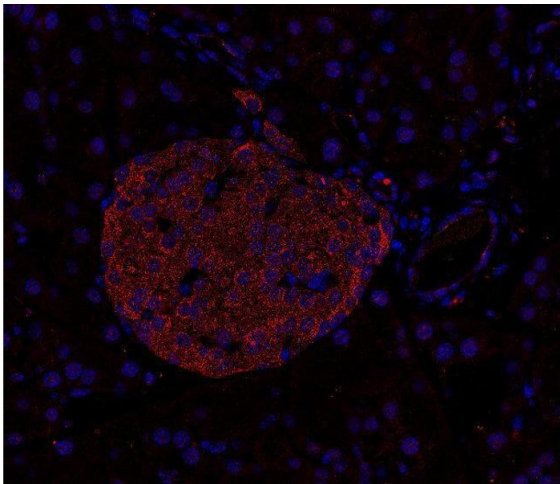
Western Blotting

Image 1. dilution: 1 : 1000, sample: crude synaptosomal fraction of rat brain (P2)



Immunocytochemistry

Image 2. Indirect immunostaining of HELA cells with anti-syntaxin 7 (dilution 1 : 100; red) and mouse anti- α -tubulin (cat. no. 302 211, dilution 1 : 100; green). Nuclei have been visualized by DAPI staining.



Immunohistochemistry (Paraffin-embedded Sections)

Image 3. Indirect immunostaining of PFA-fixed paraffin embedded mouse pancreas section (dilution 1 : 200). Immunoreactive structures in islets of Langerhans have been revealed with fluorochromated secondary antibodies (red). Nuclei have been visualized by DAPI staining (blue).