

Datasheet for ABIN1742233
anti-Syntaxin 16 antibody (AA 1-302)

2 Images

[Go to Product page](#)

Overview

Quantity:	50 µg
Target:	Syntaxin 16 (STX16)
Binding Specificity:	AA 1-302
Reactivity:	Human, Mouse, Rat, Hamster
Host:	Rabbit
Clonality:	Polyclonal
Conjugate:	This Syntaxin 16 antibody is un-conjugated
Application:	Western Blotting (WB), ELISA, Immunocytochemistry (ICC)

Product Details

Immunogen:	Recombinant protein of rat syntaxin 16b (aa 1-302).
Specificity:	Recognizes all four isoforms syntaxin 16a, b, c, d.
Purification:	Affinity purified with the immunogen. Rabbit serum albumin was added for stabilization.

Target Details

Target:	Syntaxin 16 (STX16)
Alternative Name:	Syntaxin 16 (STX16 Products)
Pathways:	Synaptic Vesicle Exocytosis

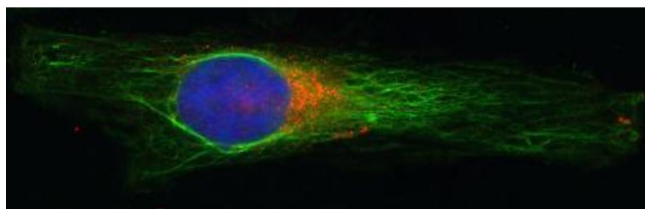
Application Details

Application Notes:	WB: 1 : 1000 up to 1 : 5000 (AP staining) IP: not tested yet ICC: 1 : 100 up to 1 : 500 IHC: not tested yet
Comment:	ELISA: Suitable as detector antibody for sandwich-ELISA with ABIN1742231 as capture antibody (protocol for sandwich-ELISA).
Restrictions:	For Research Use only

Handling

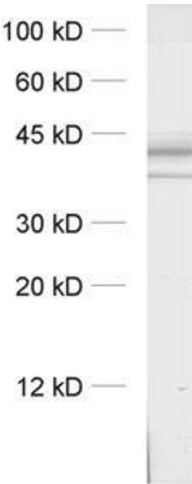
Format:	Lyophilized
Reconstitution:	For reconstitution add 50 µL H ₂ O to get a 1mg/ml solution of antibody in PBS. Then aliquot and store at -20 °C until use.
Buffer:	PBS
Handling Advice:	Affinity purified antibodies are less robust than antisera, since protease inhibitors are also removed during purification. Hence, storage at 4 °C for prolonged periods (i.e. several weeks), is not recommended.
Storage:	-20 °C
Storage Comment:	Unlabeled lyophilized antibodies are stable in this form without loss of quality at ambient temperatures for several weeks or even months. They can be stored at 4°C for several years. Lyophilized antibodies must not be stored in the freezer, they may be destroyed!

Images



Immunocytochemistry

Image 1. Indirect immunostaining of HELA cells with anti-syntaxin 16 (dilution 1 : 100; red) and mouse anti- α -tubulin (cat. no. 302 211, dilution 1 : 100; green). Nuclei have been visualized by DAPI staining.



Western Blotting

Image 2. dilution: 1 : 1000, sample: crude synaptosomal fraction of rat brain (P2)