

Datasheet for ABIN1742235

anti-SNAP25 antibody (AA 192-206)



[Go to Product page](#)

4 Images

9 Publications

Overview

Quantity:	200 µL
Target:	SNAP25
Binding Specificity:	AA 192-206
Reactivity:	Human, Rat, Mouse, Chicken, Zebrafish (Danio rerio), Hamster, Goldfish
Host:	Rabbit
Clonality:	Polyclonal
Application:	Western Blotting (WB), ELISA, Immunohistochemistry (IHC), Immunoprecipitation (IP), Immunocytochemistry (ICC)

Product Details

Immunogen:	Synthetic peptide IDEANQRATKMLGSG (aa 192-206 in human SNAP 25) coupled to key-hole limpet hemocyanin via an added N-terminal cysteine residue.
Specificity:	Specific for SNAP 25.
Purification:	antiserum

Target Details

Target:	SNAP25
Alternative Name:	SNAP 25 (SNAP25 Products)
Pathways:	Positive Regulation of Peptide Hormone Secretion , Hormone Transport , Synaptic Vesicle Exocytosis , Dicarboxylic Acid Transport

Application Details

Application Notes:	WB: 1 : 10000 (AP staining) ICC: 1 : 100
Comment:	Recognizes the Botulinum neurotoxin A cleavage product with reduced affinity. Does not detect the neurotoxin E cleavage product. Recognizes splice variants SNAP 25A and B. ELISA: Suitable as detector antibody for sandwich-ELISA as capture antibody (protocol for sandwich-ELISA).
Restrictions:	For Research Use only

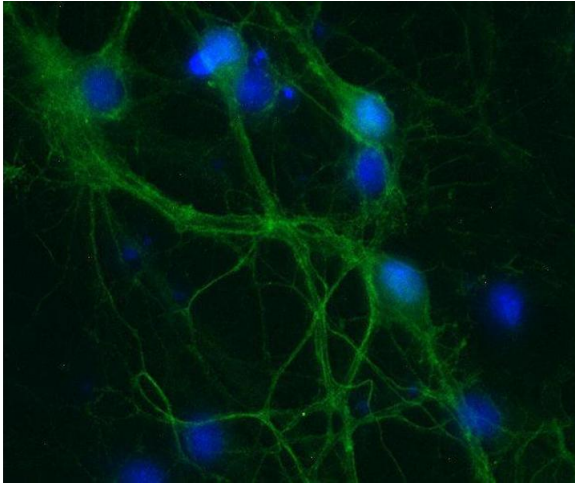
Handling

Format:	Liquid
Buffer:	PBS
Handling Advice:	Crude antisera are more robust than monoclonals. With anti-microbials added, they may be stored at 4 °C. Serum does not contain active proteases, in fact, serum itself contains a powerful cocktail of protease inhibitors. Frozen storage (-20 °C), however, is preferable.
Storage:	4 °C/-20 °C
Storage Comment:	Unlabeled antibodies are stable in this form without loss of quality at ambient temperatures for several weeks or even months. They can be stored at 4 °C for several years.

Publications

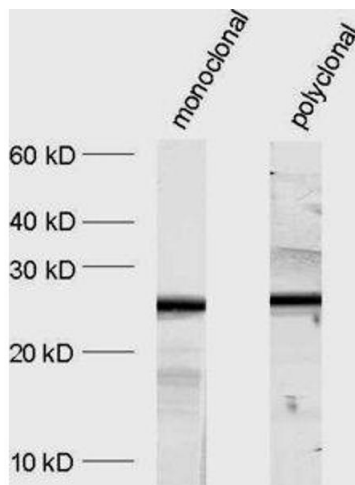
Product cited in:	Yeo, Ting, Brena, Koh, Chen, Toh, Lim, Oh, Lee: "Genome-Wide Transcriptome and Binding Sites Analyses Identify Early FOX Expressions for Enhancing Cardiomyogenesis Efficiency of hESC Cultures." in: Scientific reports , Vol. 6, pp. 31068, (2016) (PubMed).
-------------------	---

There are more publications referencing this product on: [Product page](#)



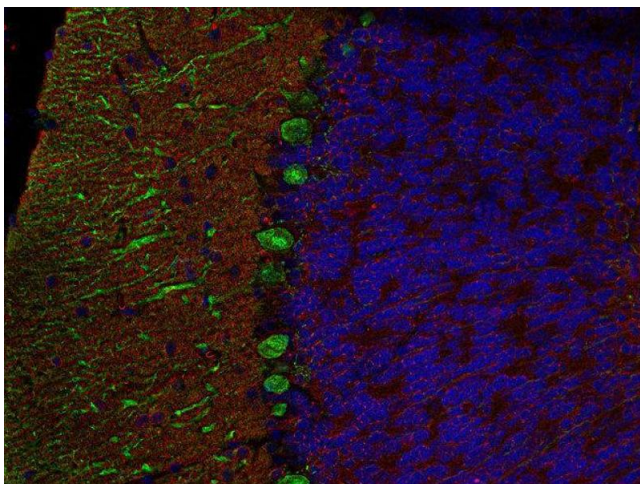
Immunocytochemistry

Image 1. Indirect immunostaining of PFA fixed rat hippocampus neurons (dilution 1 : 500; green). Nuclei have been visualized by DAPI staining (blue).



Western Blotting

Image 2. dilution: 1 : 1000, sample: crude synaptosomal fraction of rat brain (P2)



Immunohistochemistry (Paraffin-embedded Sections)

Image 3. Indirect immunofluorescence labeling of PFA fixed, paraffin embedded mouse cerebellum section with anti-SNAP 25 (dilution 1 : 500; red) and mouse anti-calbindin (cat. no. 214 011, dilution 1 : 500; green). Nuclei have been visualized by DAPI staining (blue).

Please check the [product details page](#) for more images. Overall 4 images are available for ABIN1742235.