

Datasheet for ABIN1742239

**anti-SNAP29 antibody**[Go to Product page](#)

1 Image

1 Publication

## Overview

Quantity:	200 µL
Target:	SNAP29
Reactivity:	Human, Mouse, Rat, Hamster
Host:	Rabbit
Clonality:	Polyclonal
Application:	Western Blotting (WB), Immunoprecipitation (IP)

## Product Details

Immunogen:	Recombinant full length rat SNAP 29.
Specificity:	Specific for SNAP 29.
Purification:	antiserum

## Target Details

Target:	SNAP29
Alternative Name:	SNAP 29 ( <a href="#">SNAP29 Products</a> )
Background:	Synonyms: GS 32

## Application Details

Application Notes:	WB: 1 : 1000 (AP staining) ICC: 1 : 500 IHC: not recommended
--------------------	--

## Application Details

Comment: ICC: The affinity purified antibody is highly recommended. Methanol fixation gives stronger signals.

Restrictions: For Research Use only

## Handling

Format: Liquid

Buffer: PBS

Handling Advice: Crude antisera are more robust than monoclonals. With anti-microbials added, they may be stored at 4 °C.  
Serum does not contain active proteases, in fact, serum itself contains a powerful cocktail of protease inhibitors. Frozen storage (-20 °C), however, is preferable.

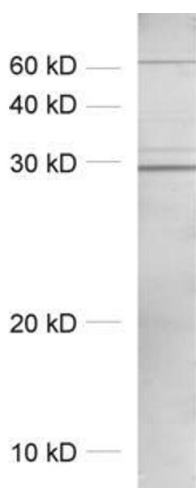
Storage: 4 °C/-20 °C

Storage Comment: Unlabeled antibodies are stable in this form without loss of quality at ambient temperatures for several weeks or even months. They can be stored at 4 °C for several years.

## Publications

Product cited in: McLinden, Kaufman, Xiang, Chang, Klinzman, Engel, Hess, Schmidt, Houghton, Stapleton: "Characterization of an immunodominant antigenic site on GB virus C glycoprotein E2 that is involved in cell binding." in: **Journal of virology**, Vol. 80, Issue 24, pp. 12131-40, (2006) ([PubMed](#)).

## Images



### Western Blotting

**Image 1.** dilution: 1 : 1000, sample: crude synaptosomal fraction of rat brain (P2)