



[Go to Product page](#)

Datasheet for ABIN1742260
anti-SV2C antibody (AA 2-16)

3 Images

2 Publications

Overview

Quantity:	200 µL
Target:	SV2C
Binding Specificity:	AA 2-16
Reactivity:	Human, Rat, Mouse, Cow, Dog
Host:	Rabbit
Clonality:	Polyclonal
Application:	Western Blotting (WB), Immunohistochemistry (IHC), Immunocytochemistry (ICC)

Product Details

Immunogen:	Synthetic peptide of rat SV2 C (aa 2-16) coupled to key-hole limpet hemocyanin via an added C-terminal cysteine residue.
Specificity:	Specific for SV2 C.
Purification:	antiserum

Target Details

Target:	SV2C
Alternative Name:	SV2 C (SV2C Products)

Application Details

Application Notes:	WB: 1 : 1000 (AP staining) IP: not tested yet
--------------------	--

Application Details

ICC: 1 : 500

Comment: WB: SV2 aggregates after boiling, making it necessary to run SDS-PAGE only with non-boiled samples.

Restrictions: For Research Use only

Handling

Format: Liquid

Buffer: PBS

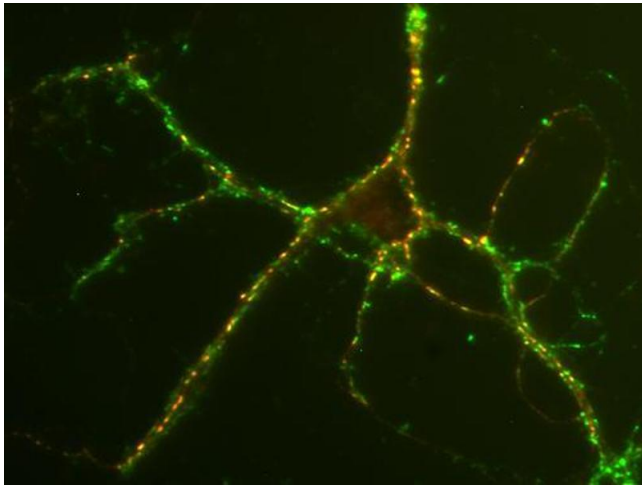
Handling Advice: Crude antisera are more robust than monoclonals. With anti-microbials added, they may be stored at 4 °C.
Serum does not contain active proteases, in fact, serum itself contains a powerful cocktail of protease inhibitors. Frozen storage (-20 °C), however, is preferable.

Storage: 4 °C/-20 °C

Storage Comment: Unlabeled antibodies are stable in this form without loss of quality at ambient temperatures for several weeks or even months. They can be stored at 4 °C for several years.

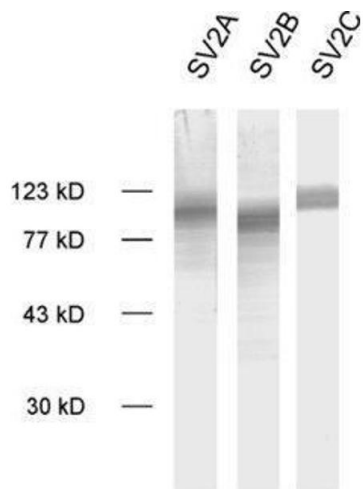
Publications

Product cited in: Otero, Fellows, Li, de Bizemont, Dirac, Gustafsson, Erdjument-Bromage, Tempst, Svejstrup: "Elongator, a multisubunit component of a novel RNA polymerase II holoenzyme for transcriptional elongation." in: **Molecular cell**, Vol. 3, Issue 1, pp. 109-18, (1999) ([PubMed](#)).



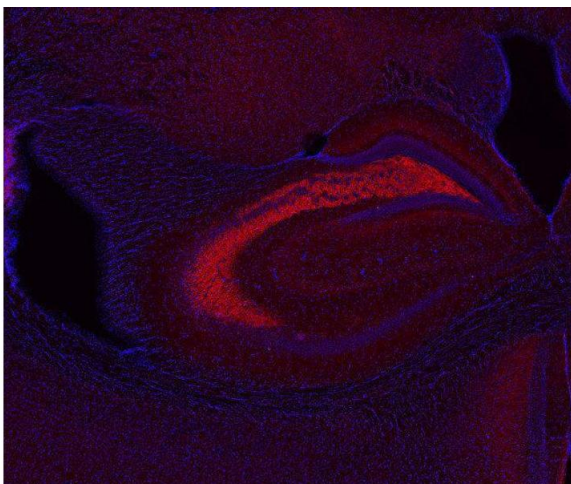
Immunocytochemistry

Image 1. Immunostaining of rat hippocampus neurons with anti-SV2 C (red; dilution: 1 : 500) and anti-synaptophysin (cat. no. 101 011; dilution: 1 : 200; green).



Western Blotting

Image 2. dilution: 1 : 1000, sample: crude synaptic vesicle fraction of rat brain (LP2)



Immunohistochemistry

Image 3. Indirect immunostaining of PFA fixed mouse brain section (dilution 1 : 200; red). Nuclei have been visualized by DAPI staining (blue).