

Datasheet for ABIN1742262

anti-Amphiphysin antibody (AA 2-15)

3 Images

9 Publications

[Go to Product page](#)

Overview

| | |
|----------------------|---|
| Quantity: | 200 µL |
| Target: | Amphiphysin (AMPH) |
| Binding Specificity: | AA 2-15 |
| Reactivity: | Human, Mouse, Rat, Chicken, Hamster |
| Host: | Rabbit |
| Clonality: | Polyclonal |
| Application: | Western Blotting (WB), Immunohistochemistry (IHC), Immunoprecipitation (IP), Immunocytochemistry (ICC) |

Product Details

| | |
|---------------|---|
| Immunogen: | Synthetic peptide ADIKTGIFAKNVQK (aa 2-15 of amphiphysin I) coupled to key-hole limpet hemocyanin via an added N-terminal cysteine residue. |
| Specificity: | Specific for amphiphysin. |
| Purification: | antiserum |

Target Details

| | |
|-------------------|---|
| Target: | Amphiphysin (AMPH) |
| Alternative Name: | Amphiphysin (AMPH Products) |

Application Details

| | |
|--------------------|----------------------------|
| Application Notes: | WB: 1 : 1000 (AP staining) |
|--------------------|----------------------------|

Application Details

ICC: 1 : 500

IHC: 1 : 400

Restrictions: For Research Use only

Handling

Format: Liquid

Buffer: PBS

Handling Advice: Crude antisera are more robust than monoclonals. With anti-microbials added, they may be stored at 4 °C.
Serum does not contain active proteases, in fact, serum itself contains a powerful cocktail of protease inhibitors. Frozen storage (-20 °C), however, is preferable.

Storage: 4 °C/-20 °C

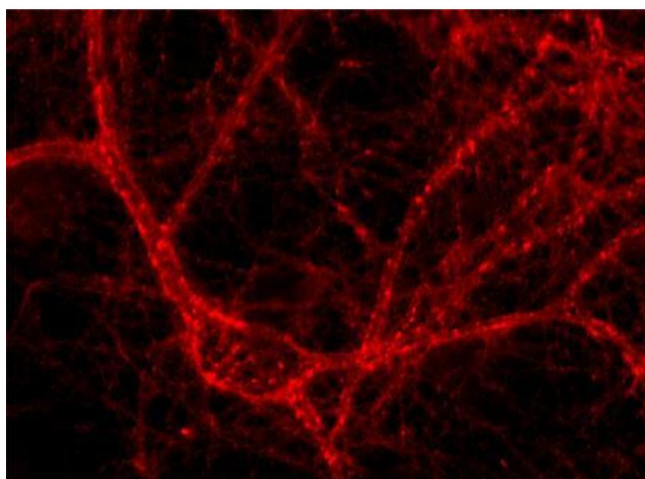
Storage Comment: Unlabeled antibodies are stable in this form without loss of quality at ambient temperatures for several weeks or even months. They can be stored at 4 °C for several years.

Publications

Product cited in: Keim, Johnson, Wheelock, Wahl: "Generation and characterization of monoclonal antibodies against the proregion of human desmoglein-2." in: **Hybridoma (2005)**, Vol. 27, Issue 4, pp. 249-58, (2008) ([PubMed](#)).

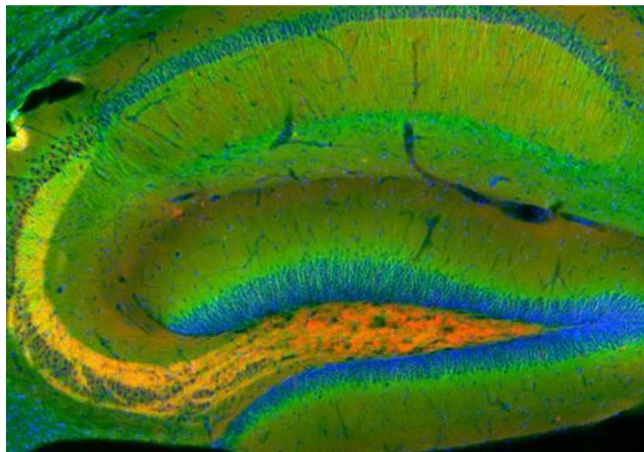
There are more publications referencing this product on: [Product page](#)

Images



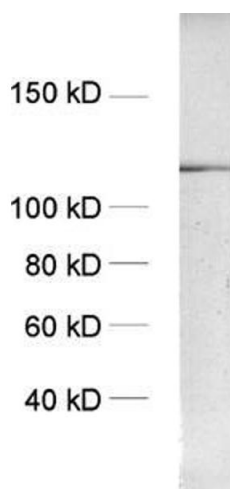
Immunocytochemistry

Image 1. Immunocytochemistry on cultured hippocampus neurons (dilution 1 : 500). Immunoreactivity was revealed with a fluorochromated secondary antibody.



Immunohistochemistry

Image 2. Indirect immunohistochemistry of a rat hippocampus section with rabbit anti-amphiphysin (cat. no.: 120 002, dilution 1 : 400; red) and rat anti-alpha tubulin (cat. no. 302 217, dilution 1 : 400; green). Nuclei were visualized by DAPI staining.



Western Blotting

Image 3. dilution: 1 : 1000, sample: crude synaptosomal fraction of rat brain (P2)