

Datasheet for ABIN1742263
anti-SCAMP1 antibody (AA 2-15)[2 Images](#)[9 Publications](#)[Go to Product page](#)

Overview

Quantity:	200 µL
Target:	SCAMP1
Binding Specificity:	AA 2-15
Reactivity:	Human, Rat, Mouse, Hamster
Host:	Rabbit
Clonality:	Polyclonal
Application:	Western Blotting (WB), Immunohistochemistry (IHC), Immunocytochemistry (ICC), Immunoprecipitation (IP)

Product Details

Immunogen:	Synthetic peptide SDFDSNPFADPDLN (aa 2-15 in rat) coupled to key-hole limpet hemocyanin via an added N-terminal cysteine residue.
Specificity:	Specific for SCAMP 1.
Purification:	antiserum

Target Details

Target:	SCAMP1
Alternative Name:	SCAMP 1 (SCAMP1 Products)

Application Details

Application Notes:	WB: 1 : 1000 (AP staining)
--------------------	----------------------------

Application Details

IHC: 1 : 1000 up to 1 : 5000

Restrictions: For Research Use only

Handling

Format: Liquid

Buffer: PBS

Handling Advice: Crude antisera are more robust than monoclonals. With anti-microbials added, they may be stored at 4 °C.

Serum does not contain active proteases, in fact, serum itself contains a powerful cocktail of protease inhibitors. Frozen storage (-20 °C), however, is preferable.

Storage: 4 °C/-20 °C

Storage Comment: Unlabeled antibodies are stable in this form without loss of quality at ambient temperatures for several weeks or even months. They can be stored at 4 °C for several years.

Publications

Product cited in: Wiedemann, Giehl, Almo, Fedorov, Girvin, Steinberger, Rüdiger, Ortner, Sippl, Dolecek, Kraft, Jockusch, Valenta: "Molecular and structural analysis of a continuous birch profilin epitope defined by a monoclonal antibody." in: **The Journal of biological chemistry**, Vol. 271, Issue 47, pp. 29915-21, (1997) ([PubMed](#)).

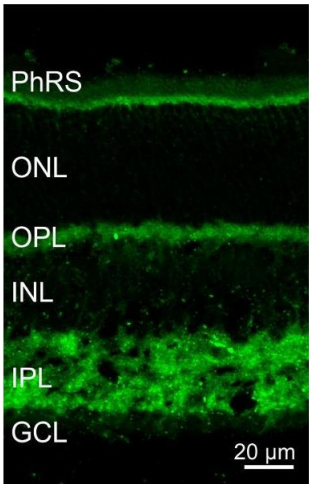
There are more publications referencing this product on: [Product page](#)

Validation report #101568 for Immunofluorescence (IF)



Western Blotting

Image 1. dilution: 1 : 1000, sample: crude synaptosomal fraction of rat brain (P2)



Immunohistochemistry

Image 2. Indirect immunostaining of a PFA fixed mouse retina section (dilution 1 : 5000). SCAMP-positive structures have been revealed with fluorochromated secondary antibodies