

Datasheet for ABIN1742266

anti-CPLX3 antibody

3 Images

1 Publication

[Go to Product page](#)

Overview

Quantity:	100 µg
Target:	CPLX3
Reactivity:	Mouse, Rat
Host:	Mouse
Clonality:	Monoclonal
Application:	Western Blotting (WB), Immunohistochemistry (IHC)

Product Details

Immunogen:	Recombinant full length protein of mouse complexin 3.
Clone:	294C2
Isotype:	IgG1
Specificity:	Specific for complexin 3
Cross-Reactivity (Details):	no cross reaction to other complexins.
Purification:	purified IgG

Target Details

Target:	CPLX3
Alternative Name:	Complexin 3 (CPLX3 Products)
Background:	Synonyms: CPX 3
Pathways:	Hormone Transport, Synaptic Vesicle Exocytosis

Application Details

Application Notes:	WB: 1 : 1000 (ECL detection) IP: not tested yet ICC: not tested yet IHC: 1 : 500 IHC-P: 1 : 200
--------------------	---

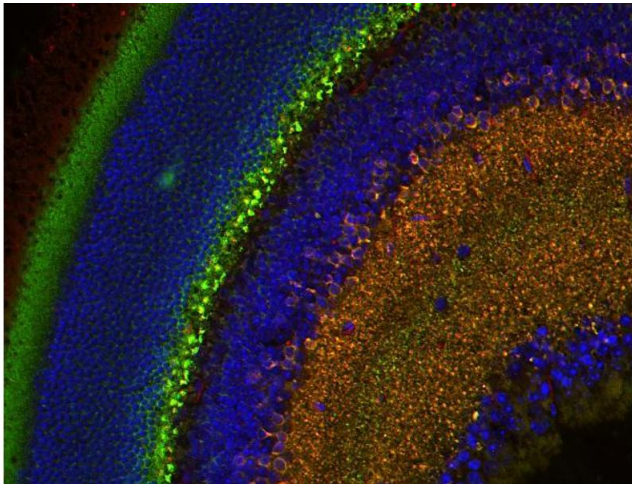
Restrictions:	For Research Use only
---------------	-----------------------

Handling

Format:	Lyophilized
Reconstitution:	For reconstitution add 100 µL H ₂ O to get a 1mg/ml solution of antibody in PBS. Then aliquot and store at -20 °C until use.
Buffer:	PBS
Handling Advice:	Do not store diluted antibody solutions unless you add detergent or carrier proteins such as goat serum, BSA or others. IgG sticks to glass and plastic. Any IgG solution below 0.1 mg/mL protein will quickly adsorb and denature and thus lose activity! Repetitive freeze-thawing of dilute purified IgG is almost certain to lead to substantial losses.
Storage:	-20 °C
Storage Comment:	Unlabeled antibodies are stable in this form without loss of quality at ambient temperatures for several weeks or even months. They can be stored at 4 °C for several years.

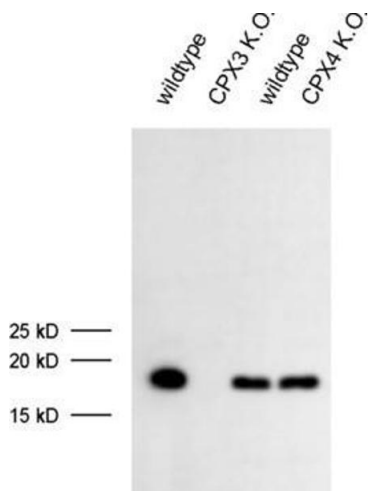
Publications

Product cited in:	Atkinson, Floerchinger, Qiao, Casey, Williamson, Moseley, Stoica, Goddard, Ge, Tullius, Tomlinson: "Donor brain death exacerbates complement-dependent ischemia/reperfusion injury in transplanted hearts." in: Circulation , Vol. 127, Issue 12, pp. 1290-9, (2013) (PubMed).
-------------------	---



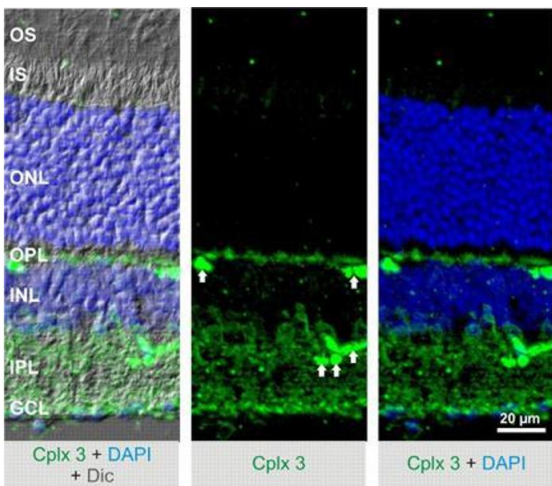
Immunohistochemistry (Paraffin-embedded Sections)

Image 1. Indirect immunostaining of paraffin embedded mouse retina section with anti-complexin 3 (dilution 1 : 200; red) and rabbit anti-complexin 4 (cat. no. 122 402, dilution 1 : 200; green). Nuclei have been visualized by DAPI staining (blue)



Western Blotting

Image 2. dilution: 1 : 1000 (ECL), sample: mouse retina extract



Immunohistochemistry

Image 3. Indirect immunostaining of mouse retina (dilution 1 : 500). Complexin 3 positive structures have been revealed with fluorochromated secondary antibodies. Nuclei have been visualized by DAPI staining.