



[Go to Product page](#)

Datasheet for ABIN1742273

anti-DLG2 antibody (AA 22-37)

1 Image

5 Publications

Overview

Quantity:	200 µL
Target:	DLG2
Binding Specificity:	AA 22-37
Reactivity:	Human, Rat, Mouse, Hamster
Host:	Rabbit
Clonality:	Polyclonal
Application:	Western Blotting (WB), Immunoprecipitation (IP), Immunocytochemistry (ICC)

Product Details

Immunogen:	Synthetic peptide DGPLDHSPLRLTHEVR (aa 22-37 in rat) coupled to key-hole limpet hemocyanin via an added N-terminal cysteine residue.
Specificity:	Specific for PSD 93.
Purification:	antiserum

Target Details

Target:	DLG2
Alternative Name:	PSD 93 (DLG2 Products)
Background:	Synonyms: Chapsin 110, DLG 2

Application Details

Application Notes: WB: 1 : 1000 (AP staining)
ICC: not recommended
IHC: not tested yet

Comment: ICC: The affinity purified antibody is recommended.

Restrictions: For Research Use only

Handling

Format: Liquid

Buffer: PBS

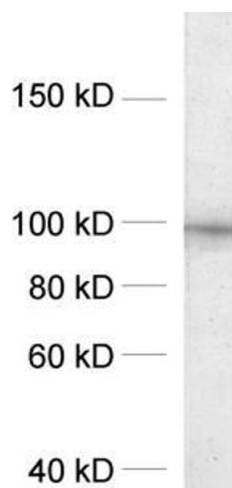
Handling Advice: Crude antisera are more robust than monoclonals. With anti-microbials added, they may be stored at 4 °C.
Serum does not contain active proteases, in fact, serum itself contains a powerful cocktail of protease inhibitors. Frozen storage (-20 °C), however, is preferable.

Storage: 4 °C/-20 °C

Storage Comment: Unlabeled antibodies are stable in this form without loss of quality at ambient temperatures for several weeks or even months. They can be stored at 4 °C for several years.

Publications

Product cited in: Wiedemann, Giehl, Almo, Fedorov, Girvin, Steinberger, Rüdiger, Ortner, Sippl, Dolecek, Kraft, Jockusch, Valenta: "Molecular and structural analysis of a continuous birch profilin epitope defined by a monoclonal antibody." in: **The Journal of biological chemistry**, Vol. 271, Issue 47, pp. 29915-21, (1997) ([PubMed](#)).



Western Blotting

Image 1. dilution: 1 : 1000, sample: crude synaptosomal fraction of rat brain (P2)