

Datasheet for ABIN1742300  
**anti-SDCBP antibody**



[Go to Product page](#)

2 Images

## Overview

Quantity:	100 µg
Target:	SDCBP
Reactivity:	Human, Rat, Mouse
Host:	Mouse
Clonality:	Monoclonal
Conjugate:	This SDCBP antibody is un-conjugated
Application:	Western Blotting (WB), Immunocytochemistry (ICC)

## Product Details

Immunogen:	Recombinant full-length human syntenin.
Clone:	32A6
Isotype:	IgG1
Specificity:	Recognizes syntenin 1 and 2.
Purification:	purified IgG

## Target Details

Target:	SDCBP
Alternative Name:	Syntenin ( <a href="#">SDCBP Products</a> )

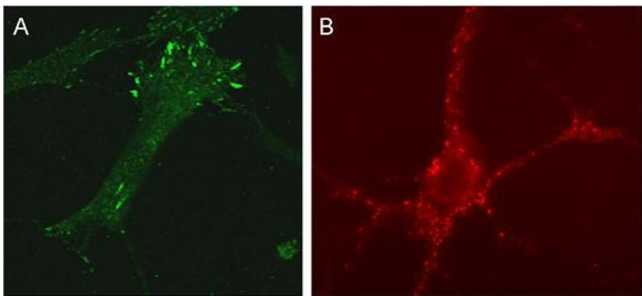
## Application Details

Application Notes:	WB: 1 : 100 (ECL detection) IP: not tested yet ICC: 1 : 100 up to 1 : 500 IHC: not tested yet
Comment:	WB: Sensitive detection methods like ECL are required to detect endogenous syntenin by WB.
Restrictions:	For Research Use only

## Handling

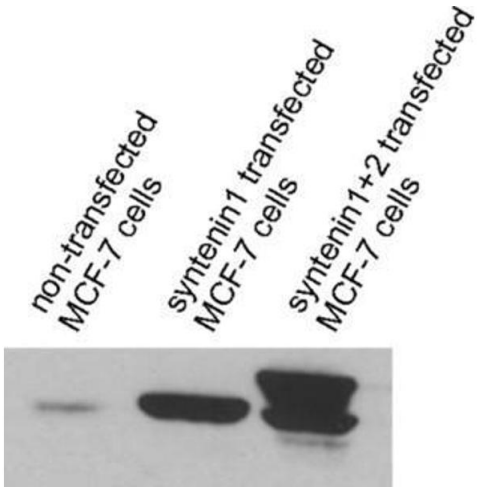
Format:	Lyophilized
Reconstitution:	For reconstitution add 100 µL H <sub>2</sub> O to get a 1mg/ml solution of antibody in PBS. Then aliquot and store at -20 °C until use.
Buffer:	PBS
Handling Advice:	Do not store diluted antibody solutions unless you add detergent or carrier proteins such as goat serum, BSA or others. IgG sticks to glass and plastic. Any IgG solution below 0.1 mg/mL protein will quickly adsorb and denature and thus loose activity! Repetitive freeze-thawing of dilute purified IgG is almost certain to lead to substantial losses.
Storage:	-20 °C
Storage Comment:	Unlabeled antibodies are stable in this form without loss of quality at ambient temperatures for several weeks or even months. They can be stored at 4 °C for several years.

## Images



### Immunocytochemistry

**Image 1.** A: Indirect immunolabeling of NHF cells (dilution 1 : 100). B: Indirect immunolabeling of hippocampus neuron (dilution 1 : 500).



Western Blotting

**Image 2.** dilution: 1 : 100 (ECL detection), sample: cell lysates of MCF-7 cells