

Datasheet for ABIN1742318

anti-GLRB antibody (AA 336-355, AA 336-455)[Go to Product page](#)**1** Image**1** Publication

Overview

Quantity:	100 µg
Target:	GLRB
Binding Specificity:	AA 336-355, AA 336-455
Reactivity:	Mouse, Rat, Monkey
Host:	Mouse
Clonality:	Monoclonal
Application:	Immunocytochemistry (ICC), Immunohistochemistry (IHC)

Product Details

Immunogen:	Recombinant protein (aa 336-455 of rat GlyR beta) Epitope aa 336-355
Clone:	299E7
Isotype:	IgG1
Specificity:	Specific for the glycine receptor beta-subunit.
Purification:	purified IgG

Target Details

Target:	GLRB
Alternative Name:	Glycine Receptor beta (GLRB Products)

Application Details

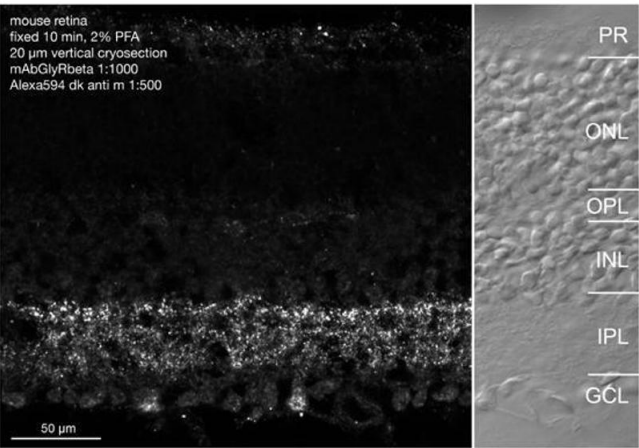
Application Notes:	WB: not recommended IP: not tested yet IHC: 1 : 500 up to 1 : 1000
Comment:	WB: Detection of overexpressed protein is possible. Endogenous levels are hardly detectable. IHC: Mild fixation for 10-15 min with cold 2 % PFA solution is recommended. Include 0,5 % triton X 100 in all blocking and antibody incubation steps.
Restrictions:	For Research Use only

Handling

Format:	Lyophilized
Reconstitution:	For reconstitution add 100 µL H ₂ O to get a 1mg/ml solution of antibody in PBS. Then aliquot and store at -20 °C until use.
Buffer:	PBS, 0.02% sodium azide
Preservative:	Sodium azide
Precaution of Use:	This product contains Sodium azide: a POISONOUS AND HAZARDOUS SUBSTANCE which should be handled by trained staff only.
Handling Advice:	Do not store diluted antibody solutions unless you add detergent or carrier proteins such as goat serum, BSA or others. IgG sticks to glass and plastic. Any IgG solution below 0.1 mg/mL protein will quickly adsorb and denature and thus loose activity! Repetitive freeze-thawing of dilute purified IgG is almost certain to lead to substantial losses.
Storage:	-20 °C
Storage Comment:	Unlabeled antibodies are stable in this form without loss of quality at ambient temperatures for several weeks or even months. They can be stored at 4 °C for several years.

Publications

Product cited in:	Yeo, Ting, Brena, Koh, Chen, Toh, Lim, Oh, Lee: "Genome-Wide Transcriptome and Binding Sites Analyses Identify Early FOX Expressions for Enhancing Cardiomyogenesis Efficiency of hESC Cultures." in: Scientific reports , Vol. 6, pp. 31068, (2016) (PubMed).
-------------------	---



Immunohistochemistry

Image 1. Indirect immunostaining of a PFA fixed mouse retina section (dilution 1 : 1000)