

Datasheet for ABIN1742326  
**anti-GRIP1 antibody (AA 662-769)**[Go to Product page](#)

## 2 Images

## Overview

Quantity:	50 µg
Target:	GRIP1
Binding Specificity:	AA 662-769
Reactivity:	Human, Mouse, Rat, Hamster
Host:	Rabbit
Clonality:	Polyclonal
Application:	Western Blotting (WB), Immunocytochemistry (ICC)

## Product Details

Immunogen:	Recombinant protein of rat GRIP (6th PDZ domain, aa 662-769).
Specificity:	Recognizes GRIP 1 and GRIP 2.
Purification:	Affinity purified with the immunogen. Rabbit serum albumin was added for stabilization.

## Target Details

Target:	GRIP1
Abstract:	<a href="#">GRIP1 Products</a>
Pathways:	<a href="#">Intracellular Steroid Hormone Receptor Signaling Pathway</a>

## Application Details

Application Notes:	WB: 1 : 100 up to 1 : 1000
--------------------	----------------------------

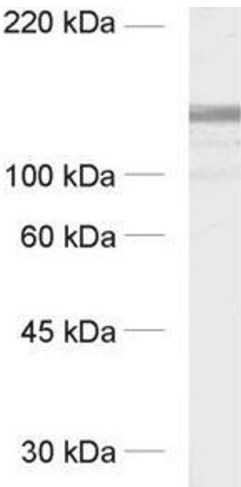
## Application Details

	IP: not tested yet
	ICC: 1 : 100
	IHC: not tested yet
	IHC: not tested yet
Restrictions:	For Research Use only

## Handling

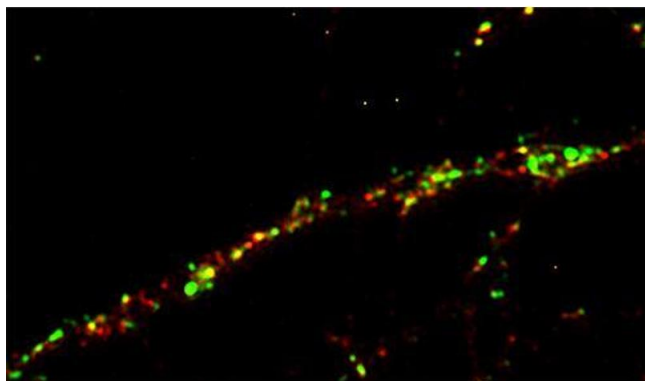
Format:	Lyophilized
Reconstitution:	For reconstitution add 50 µL H <sub>2</sub> O to get a 1mg/ml solution of antibody in PBS. Then aliquot and store at -20 °C until use.
Buffer:	PBS
Handling Advice:	Affinity purified antibodies are less robust than antisera, since protease inhibitors are also removed during purification. Hence, storage at 4 °C for prolonged periods (i.e. several weeks), is not recommended.
Storage:	-20 °C
Storage Comment:	Unlabeled lyophilized antibodies are stable in this form without loss of quality at ambient temperatures for several weeks or even months. They can be stored at 4°C for several years. Lyophilized antibodies must not be stored in the freezer, they may be destroyed!

## Images



**Western Blotting**

**Image 1.** dilution: 1 : 1000, sample: crude synaptic membranes fraction of rat brain (LP1)



#### Immunocytochemistry

**Image 2.** Immunostaining of a rat hippocampus neuron with anti-GRIP (dilution 1 : 100; red) and anti-synapsin 1 (cat. no. 106 001, dilution 1 : 500; green). Positive clusters (red) can be found on the postsynaptic neuron juxtaposed to presynaptic nerve terminals (green).