

Datasheet for ABIN1742336
anti-SH3G2 antibody (AA 256-276)

4 Images

2 Publications

[Go to Product page](#)

Overview

Quantity:	200 µL
Target:	SH3G2
Binding Specificity:	AA 256-276
Reactivity:	Mouse, Rat
Host:	Rabbit
Clonality:	Polyclonal
Application:	Western Blotting (WB), Immunohistochemistry (IHC), Immunocytochemistry (ICC)

Product Details

Immunogen:	Synthetic peptide QPKPRMSLEFATGDSTQ (aa 256-276 in mouse endophilin 1) coupled to KLH via an N-terminal cysteine.
Specificity:	Specific for endophilin 1.
Purification:	antiserum

Target Details

Target:	SH3G2
Alternative Name:	Endophilin 1 (SH3G2 Products)
Background:	Synonyms: SH3P4, SH3GL2
Pathways:	Neurotrophin Signaling Pathway , EGFR Downregulation

Application Details

Application Notes:	WB: 1 : 1000 up to 1 : 10 000 (AP staining) IP: not tested yet ICC: 1 : 500 IHC-P: 1 : 1000
--------------------	--

Restrictions:	For Research Use only
---------------	-----------------------

Handling

Format:	Liquid
---------	--------

Buffer:	PBS
---------	-----

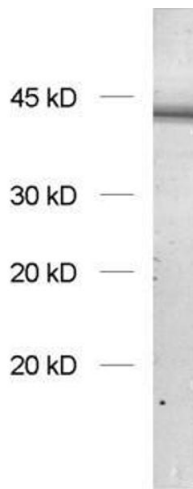
Handling Advice:	Crude antisera are more robust than monoclonals. With anti-microbials added, they may be stored at 4 °C. Serum does not contain active proteases, in fact, serum itself contains a powerful cocktail of protease inhibitors. Frozen storage (-20 °C), however, is preferable.
------------------	--

Storage:	4 °C/-20 °C
----------	-------------

Storage Comment:	Unlabeled antibodies are stable in this form without loss of quality at ambient temperatures for several weeks or even months. They can be stored at 4 °C for several years.
------------------	--

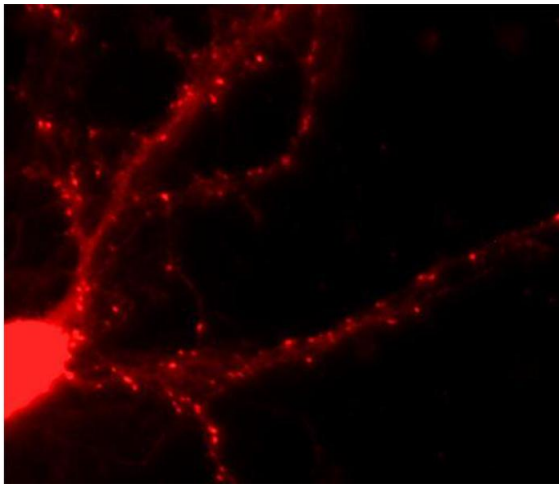
Publications

Product cited in:	Schildknecht, Karreman, Pörtl, Efrémova, Kullmann, Gutbier, Krug, Scholz, Gerding, Leist: "Generation of genetically-modified human differentiated cells for toxicological tests and the study of neurodegenerative diseases." in: ALTEX , Vol. 30, Issue 4, pp. 427-44, (2013) (PubMed).
	Tong, Wong, Guttman, Ang, Forno, Shimadzu, Rajput, Muentner, Kish, Hornykiewicz, Furukawa: "Brain alpha-synuclein accumulation in multiple system atrophy, Parkinson's disease and progressive supranuclear palsy: a comparative investigation." in: Brain : a journal of neurology , Vol. 133, Issue Pt 1, pp. 172-88, (2010) (PubMed).



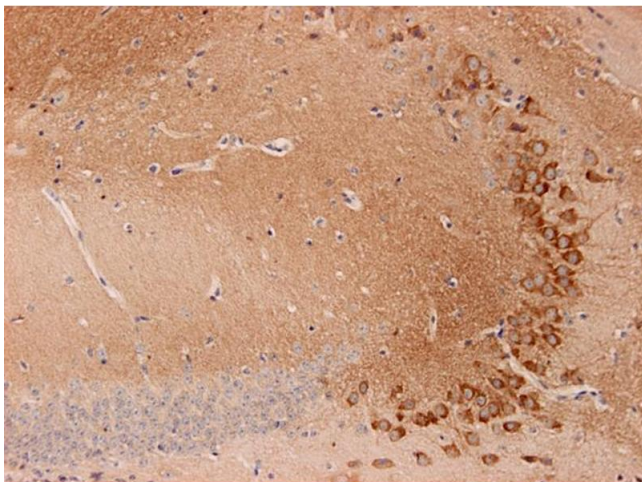
Western Blotting

Image 1. dilution: 1 : 1000, sample: rat brain homogenate



Immunocytochemistry

Image 2. Immunofluorescence labeling of a hippocampus neuron (dilution 1 : 500).



Immunohistochemistry

Image 3. Indirect immunostaining of PFA fixed mouse brain section with anti-endophilin (dilution 1 : 200; red) and guinea pig anti-SV 2C (cat. no. 119 204, dilution 1 : 200; green). Nuclei have been visualized by DAPI staining (blue).

Please check the [product details page](#) for more images. Overall 4 images are available for ABIN1742336.